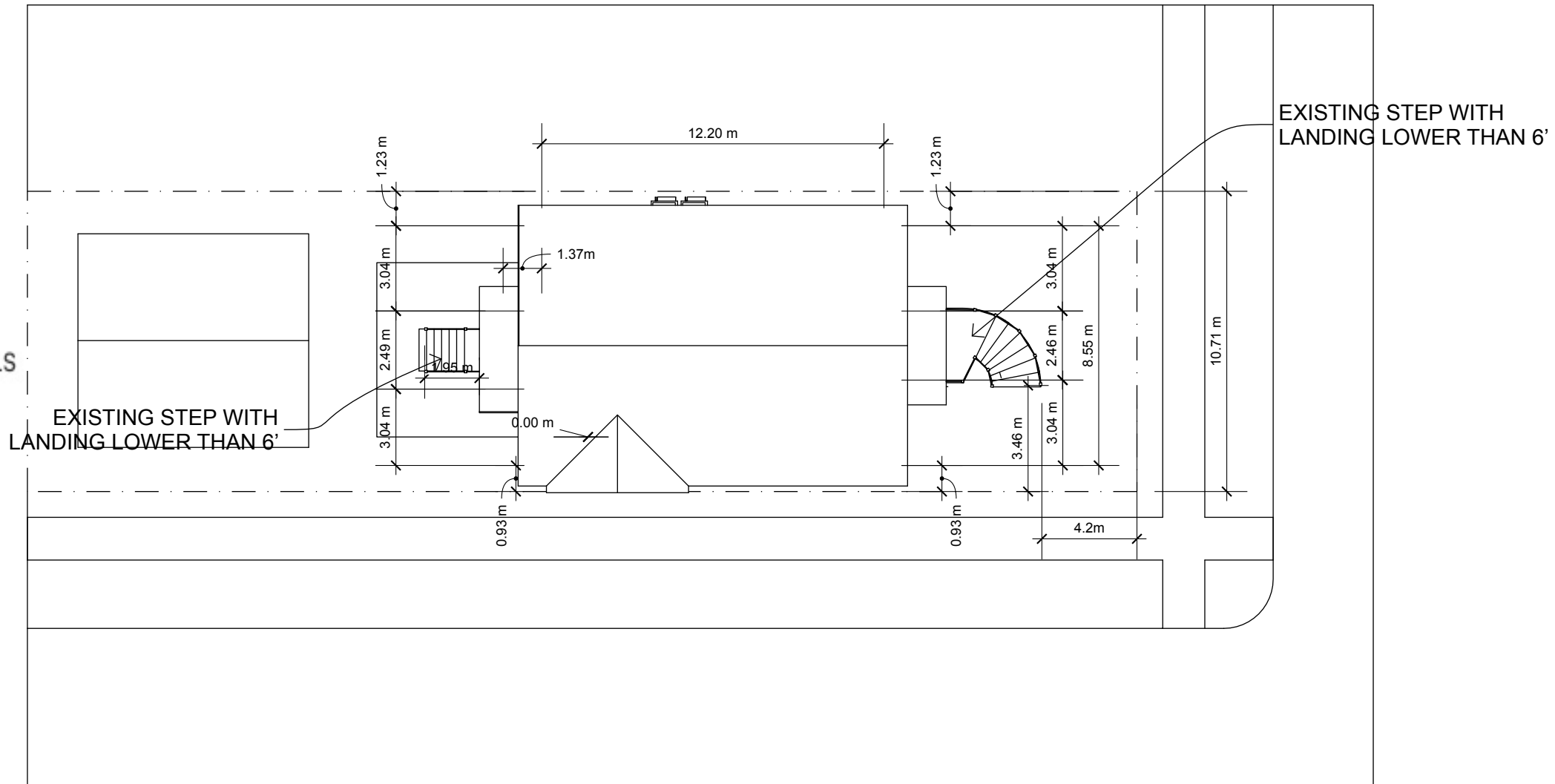


# INDEX OF DRAWINGS

- 1: SITE
- 2: EAST & WEST ELEVATIONS
- 3: SOUTH & NORTH ELEVATIONS
- 4: PERSPECTIVES
- 5: BASEMENT PLAN 1 MECH EQUIPMENT
- 6: BASEMENT PLAN 2 HRV DUCTING
- 7: MAIN PLAN
- 8: MECHANICAL PERSPECTIVES
- 9: NS SECTION
- 10: EW SECTION
- 11: EAST PANELS
- 12: SOUTH PANELS
- 13: N & S WING WALL PANELS
- 14: WEST PANELS
- 15: NORTH PANELS
- 16: WINDOW SCHEDULE
- 17: SOUTH BAY CANTILEVER DETAILS
- 18: ROOF TRUSS LAYOUT
- 19: ROOF TRUSS DETAILS
- 20: SOUTH DORMER ROOF DETAILS
- 21: ENTRY ROOF DETAILS
- 22: RPR
- 23: ENTRY STEP SET BACKS
- 24: ENTRY STEP DETAILS FRONT
- 25: ENTRY STEP DETAILS BACK

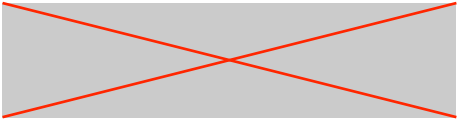
## DESCRIPTION OF WORK:

- PANELIZED DEEP ENERGY RETROFIT. ADD ~0.22M DEEP CELLULOSE FILLED PANELS TO EXISTING STRUCTURE.
- SCISSOR TRUSS ROOF C/W R50 BLOWN CELLULOSE INSULATION
- REMOVE EXISTING MASONRY CHIMNEY
- REPLACE EXISTING GAS FURNACE AND WATER TANK WITH AIR SOURCE HEAT PUMPS
- INSTALL NEW HRV



## NOTES

- ALL SET BACK DIMENSIONS ARE TO FOUNDATION
- NEW PANELS EXTEND ~ .22M OUT FROM FOUNDATION



BUTTERWICK CONSTRUCTION  
& CARPENTRY LTD.  
5628 82 Ave  
Edmonton, AB T6B 3E6  
Tel: 780.434.3559  
www.butterwick.ca

PERMIT DRAWINGS

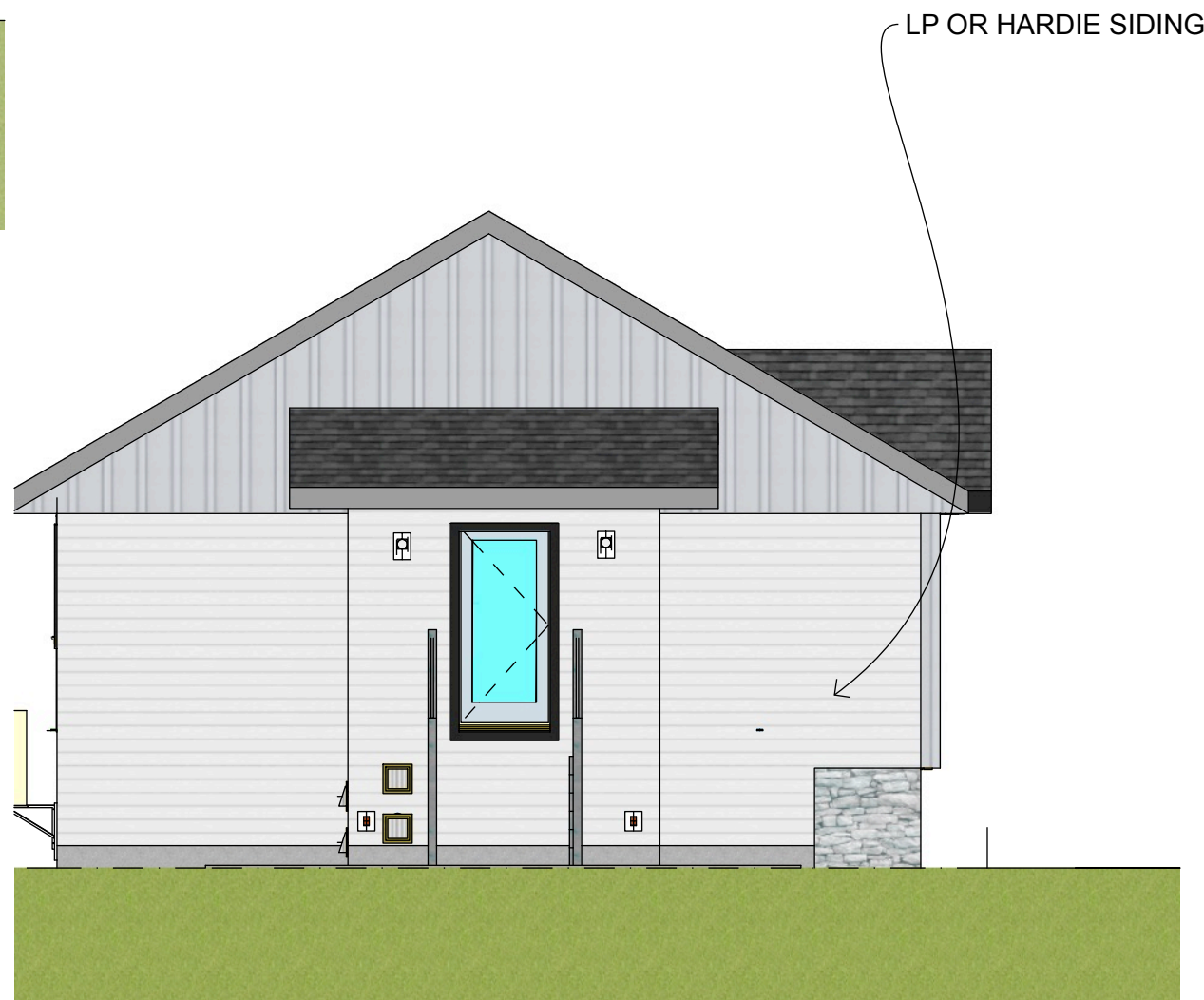
DATE  
January 7, 2023

DRAWN BY  
PA

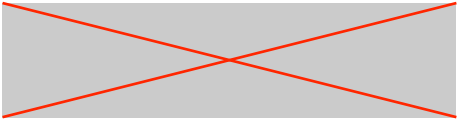
SITE



A  
2 EAST ELEVATION  
1:75



A  
2 WEST ELEVATION  
1:75



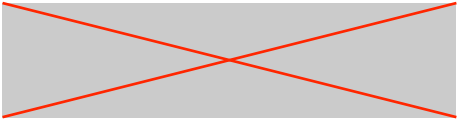
BUTTERWICK CONSTRUCTION  
& CARPENTRY LTD.  
5628 82 Ave  
Edmonton, AB T6B 3E6  
Tel: 780.434.3559  
www.butterwick.ca

PERMIT DRAWINGS

DATE  
January 7, 2023

DRAWN BY  
PA

EAST & WEST  
ELEVATIONS



**BUTTERWICK CONSTRUCTION  
& CARPENTRY LTD.**  
5628 82 Ave  
Edmonton, AB T6B 3E6  
Tel: 780.434.3559  
www.butterwick.ca



**A**  
3 SOUTH ELEVATION  
1:75



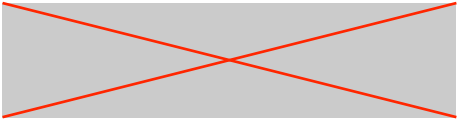
**A**  
3 NORTH ELEVATION  
1:75

**PERMIT DRAWINGS**

DATE  
January 7, 2023

DRAWN BY  
PA

SOUTH & NORTH  
ELEVATIONS



**BUTTERWICK CONSTRUCTION  
& CARPENTRY LTD.**  
5628 82 Ave  
Edmonton, AB T6B 3E6  
Tel: 780.434.3559  
www.butterwick.ca



---

**PERMIT DRAWINGS**

---

**DATE**  
January 7, 2023

---

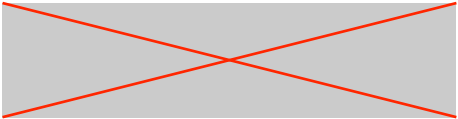
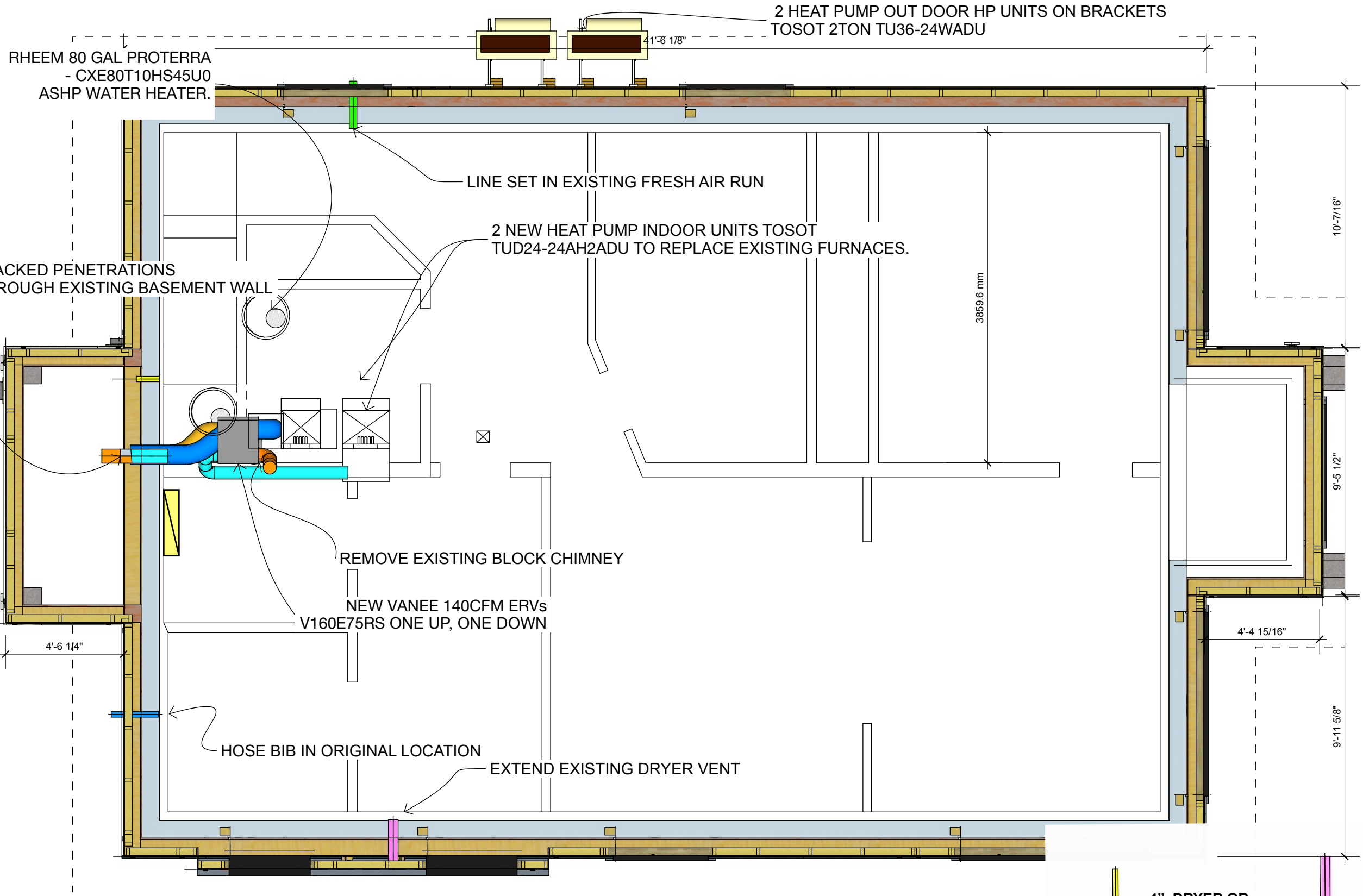
**DRAWN BY**  
PA

---

**PERSPECTIVES**

---





BUTTERWICK CONSTRUCTION  
& CARPENTRY LTD.  
5628 82 Ave  
Edmonton, AB T6B 3E6  
Tel: 780.434.3559  
www.butterwick.ca

**PERMIT DRAWINGS**

DATE  
January 7, 2023

DRAWN BY  
PA

**BASEMENT PLAN 1  
MECH EQUIPMENT**

2" POWER ENTRANCE

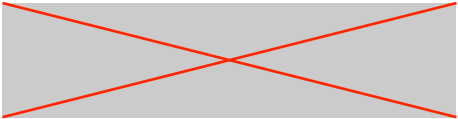
2" HOSE BIB OR HP  
LINE SET SLEEVE

3" HP LINE SET  
SLEEVE

4" DRYER OR  
HP LINE SET SLEEVE

6" HRV INTAKE

6" HRV EXHAUST



BUTTERWICK CONSTRUCTION  
& CARPENTRY LTD.  
5628 82 Ave  
Edmonton, AB T6B 3E6  
Tel: 780.434.3559  
www.butterwick.ca

6" HRV INTAKE AND EXHAUST TO  
BE INSULATED UNTIL THEY  
LEAVE THE CONDITIONED SPACE

6" RISER FOR MAIN FLOOR KITCHEN  
AND BATH IN OLD CHIMNEY CHASE

3859.6 mm

HRV SUPPLY AND EXHAUST  
UNDER BACK PORCH

BASEMENT  
BATH EXHAUST

LAUNDRY EXHAUST

BASEMENT  
KITCHEN EXHAUST

STALE AIR FROM LIVING SPACE



STALE AIR TO OUTSIDE



FRESH AIR FROM OUTSIDE



FRESH AIR TO LIVING SPACE

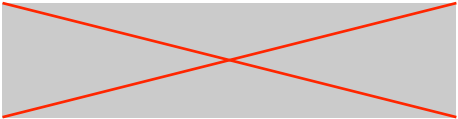
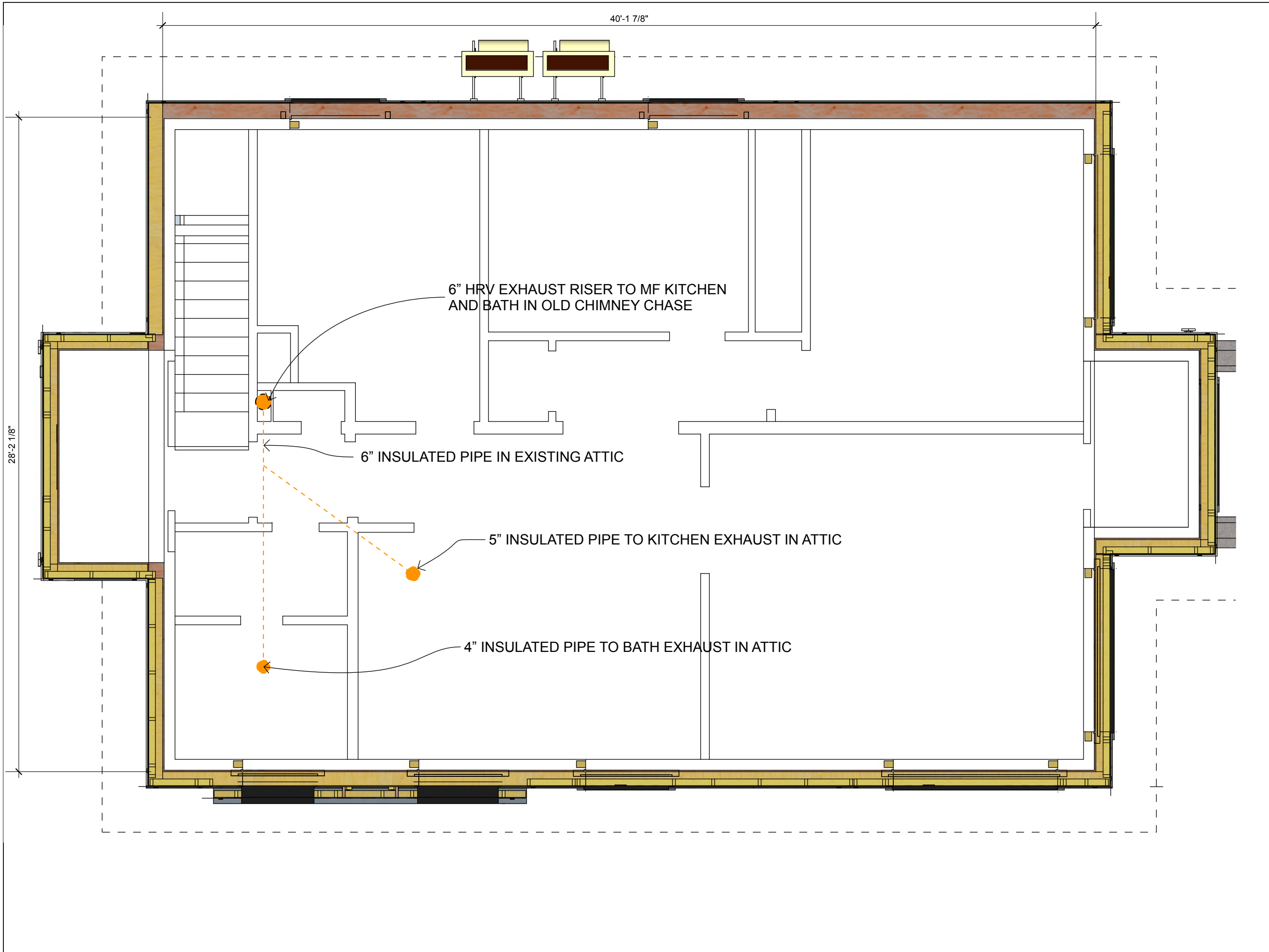


**PERMIT DRAWINGS**

DATE  
January 7, 2023

DRAWN BY  
PA

BASEMENT PLAN 2  
HRV DUCTING



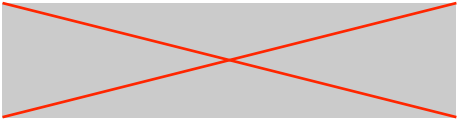
**BUTTERWICK CONSTRUCTION  
& CARPENTRY LTD.**  
 5628 82 Ave  
 Edmonton, AB T6B 3E6  
 Tel: 780.434.3559  
 www.butterwick.ca

**PERMIT DRAWINGS**

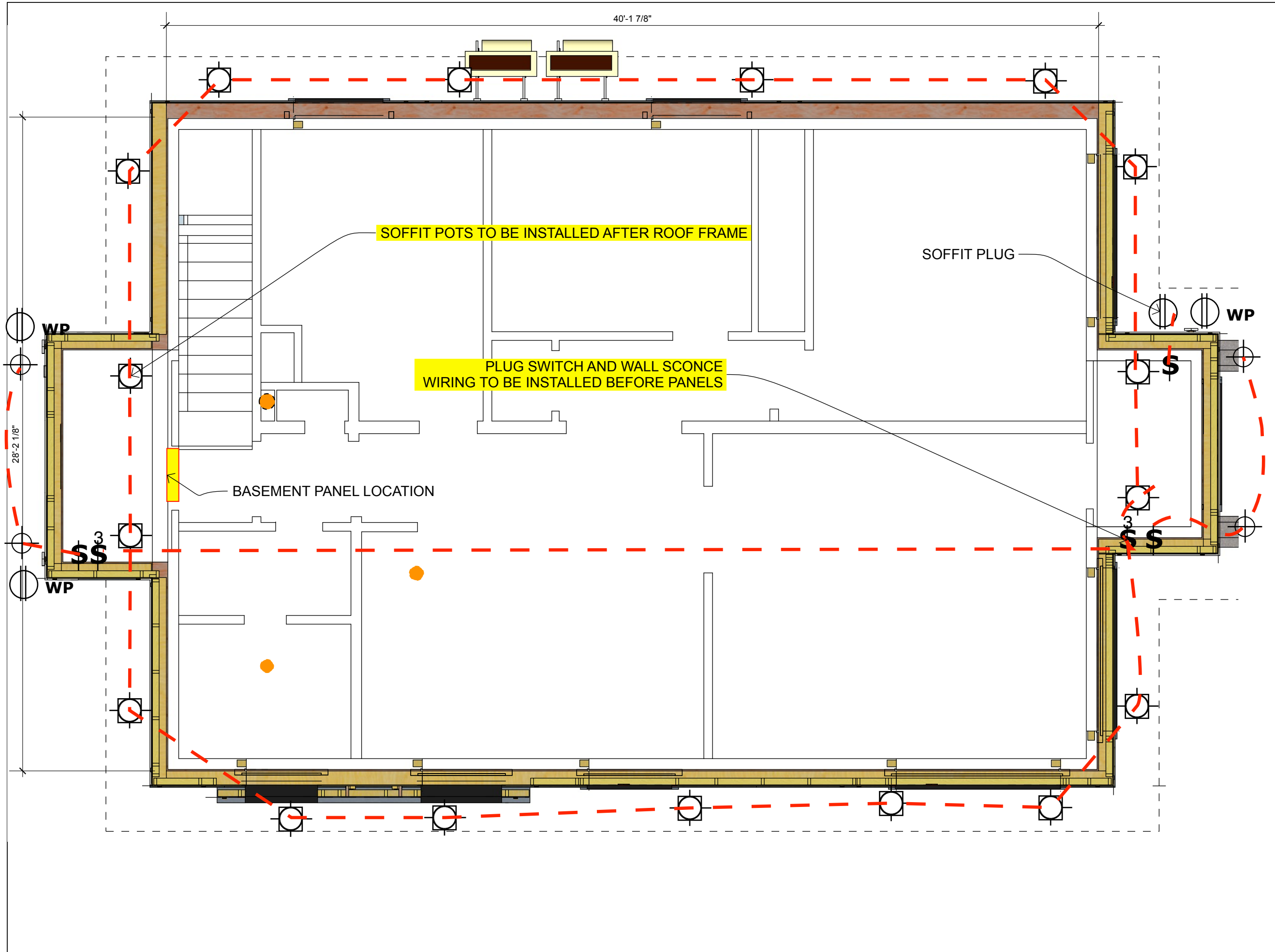
DATE  
 January 7, 2023

DRAWN BY  
 PA

**MAIN PLAN**



BUTTERWICK CONSTRUCTION  
& CARPENTRY LTD.  
5628 82 Ave  
Edmonton, AB T6B 3E6  
Tel: 780.434.3559  
www.butterwick.ca



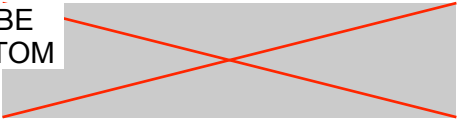
**PERMIT DRAWINGS**

DATE  
January 7, 2023

DRAWN BY  
PA

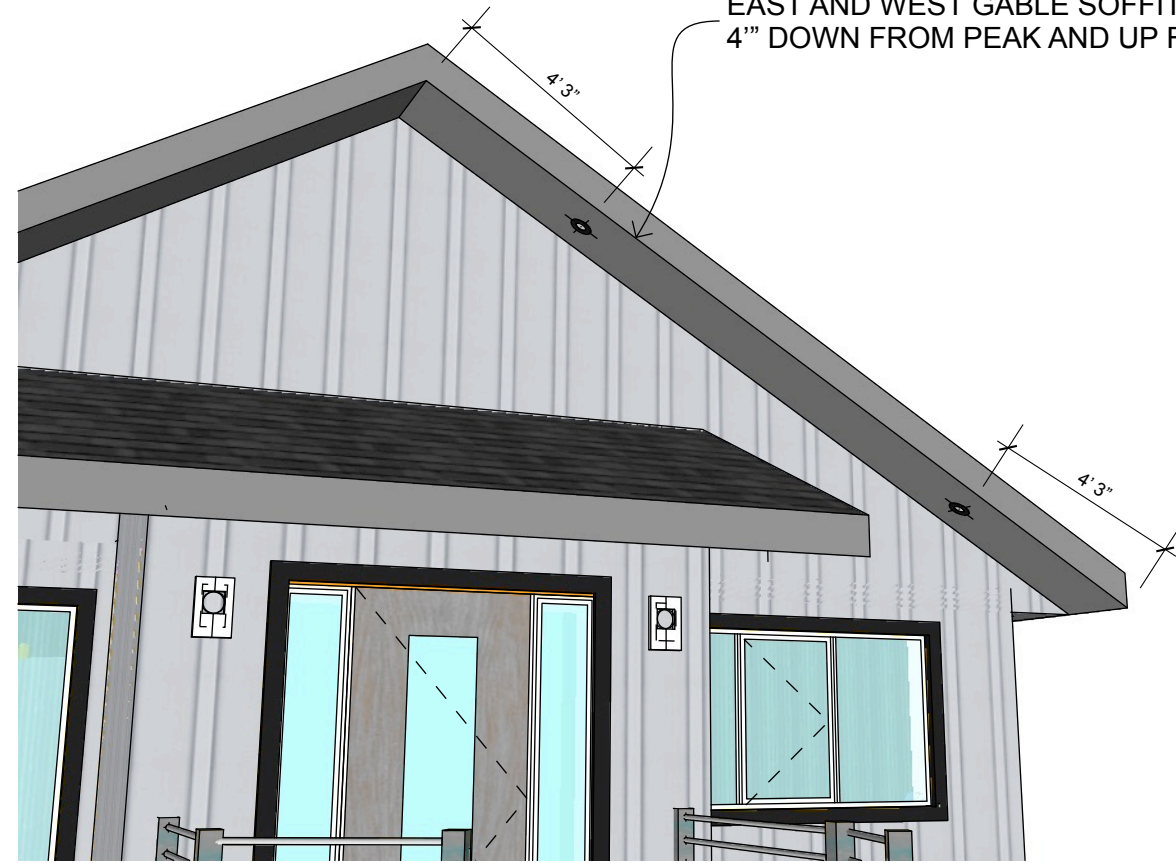
MAIN PLAN EXT  
ELECTRICAL





**BUTTERWICK CONSTRUCTION  
& CARPENTRY LTD.**  
5628 82 Ave  
Edmonton, AB T6B 3E6  
Tel: 780.434.3559  
www.butterwick.ca

EAST AND WEST GABLE SOFFIT POTS TO BE  
4" DOWN FROM PEAK AND UP FROM BOTTOM



SOFFIT LIGHTS

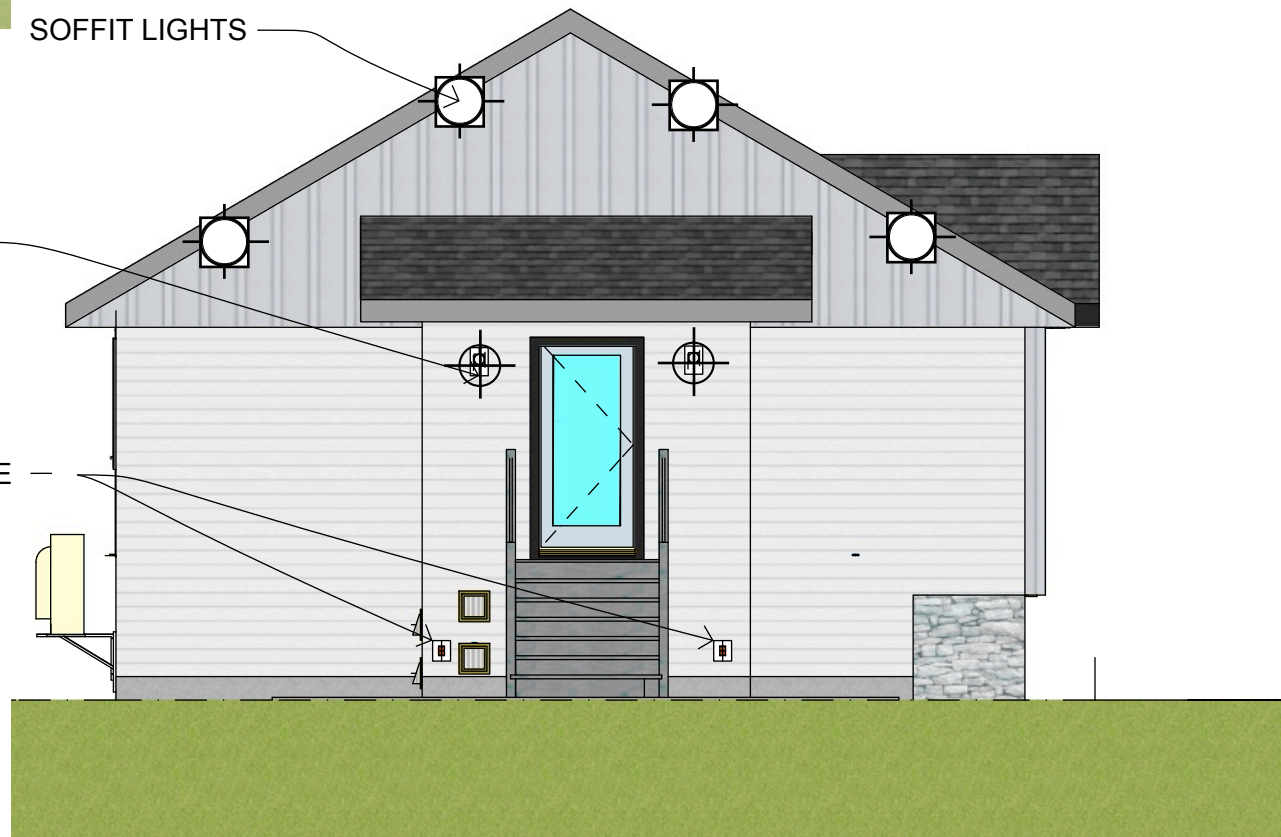
WALL SCONCES CENTRED BETWEEN  
DOOR FRAME AND CORNER BOTH SIDES

SOFFIT LIGHTS

**A**  
**9** EAST ELEVATION  
1:75

WALL SCONCES CENTRED BETWEEN  
DOOR FRAME AND CORNER BOTH SIDES

WP PLUGS BOTH SIDES OF PORCH ~ 2' ABOVE GRADE  
**NB:** THE LEFT ONE SHOULD NOT INTERFERE WITH THE  
MOVING OF THE HRV HOODS



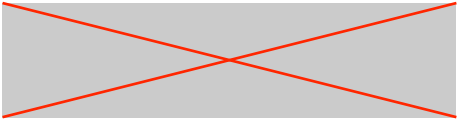
**A**  
**9** WEST ELEVATION  
1:75

**PERMIT DRAWINGS**

DATE  
January 7, 2023

DRAWN BY  
PA

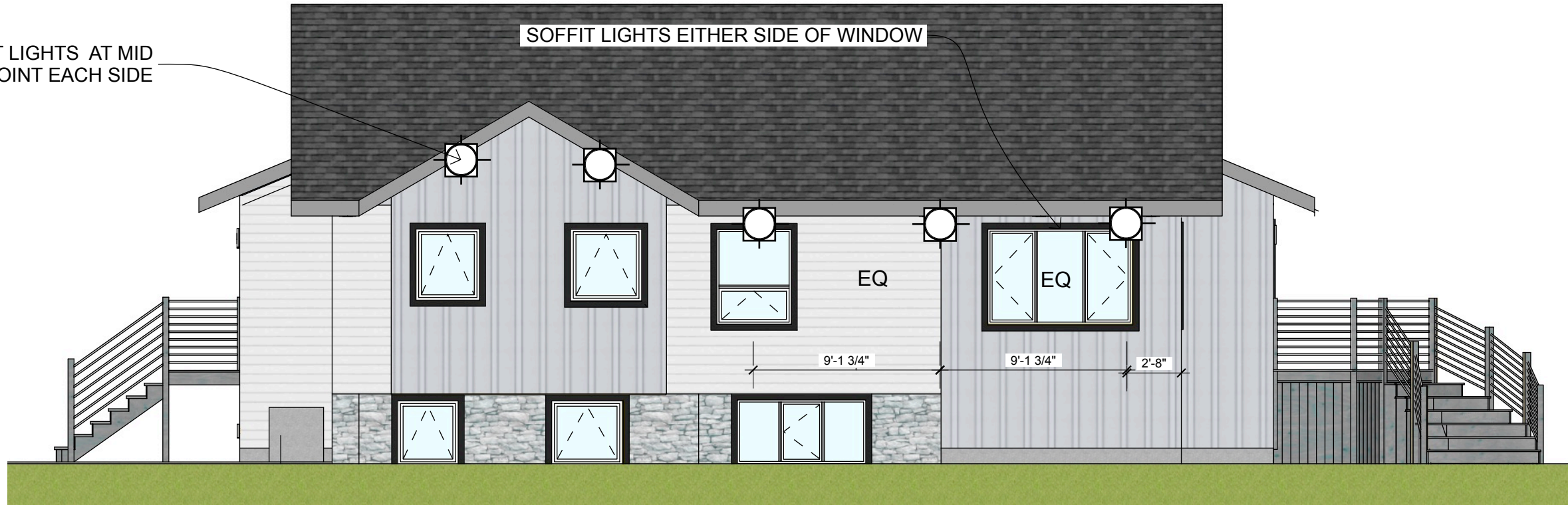
EAST & WEST EXT  
ELECTRICAL



BUTTERWICK CONSTRUCTION  
& CARPENTRY LTD.  
5628 82 Ave  
Edmonton, AB T6B 3E6  
Tel: 780.434.3559  
www.butterwick.ca

SOFFIT LIGHTS AT MID  
POINT EACH SIDE

SOFFIT LIGHTS EITHER SIDE OF WINDOW



**A**  
10 SOUTH ELEVATION  
1:75

SOFFIT PLUG



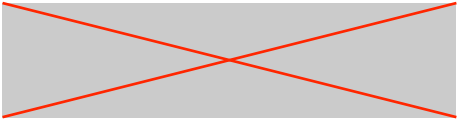
**A**  
10 NORTH ELEVATION  
1:75

**PERMIT DRAWINGS**

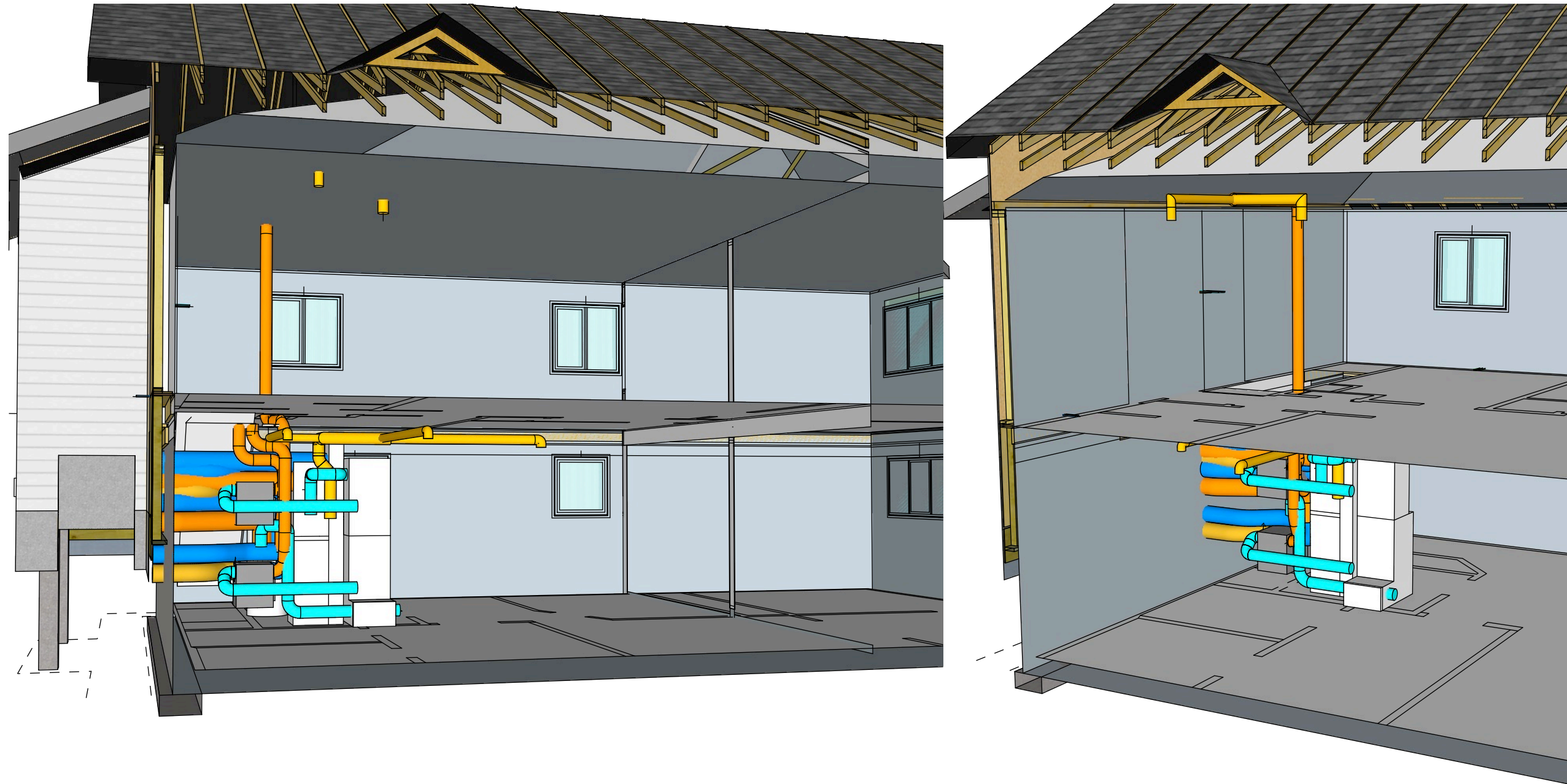
DATE  
January 7, 2023

DRAWN BY  
PA

SOUTH & NORTH  
EXT ELECTRICAL



**BUTTERWICK CONSTRUCTION  
& CARPENTRY LTD.**  
5628 82 Ave  
Edmonton, AB T6B 3E6  
Tel: 780.434.3559  
www.butterwick.ca



---

**PERMIT DRAWINGS**

---

DATE  
January 7, 2023

---

DRAWN BY  
PA

---

MECHANICAL  
PERSPECTIVES

---

ENGINEERED TRUSS OVER EXISTING ROOF  
 R 50 CELLULOSE  
 6 MIL POLY SEALED TO WALL PANEL WRB

WINDOWS:

NFRC: Energy Star U=0.85 SHGC=0.27 ER=37

NRCAN=NR5695-34935108

NAFS: LC-PG45 PDP=2160Pa(45psf) NDP=-2160Pa(-45psf)

WPRTP=720Pa(15.04psf) CAI=Fixed Mullion

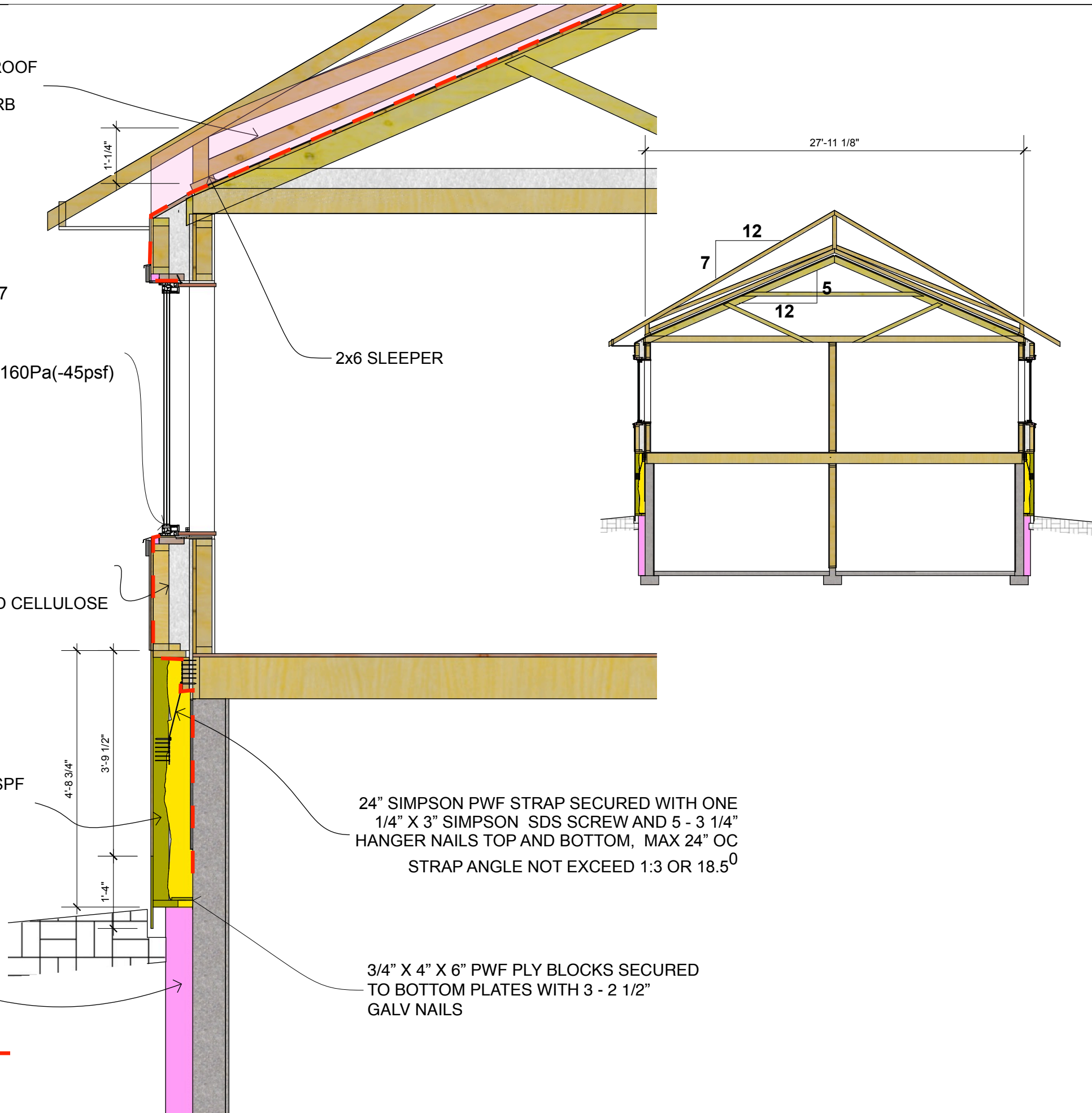
NEW RETROFIT PANELS:

- HARDIE OR LP PANEL SIDING
- 10MM VENTED RAIN SCREEN
- SIGA MAJVEST WRB AND AIR BARRIER
- 2X4 24" OC W 7/16" OSB
- CAVITY FILLED WITH 8" OF DENSE PACKED CELLULOSE
- ORIGINAL WALL

PWF PANEL SUPPORT BOX HUNG FROM 2X10 SPF LEDGER AND FILLED WITH MIN 125MM OF SPRAY FOAM INSULATION (~R30eff)

150MM GRAPHITE INFUSED (NEOPORE) EPS TO FOOTING (R30)

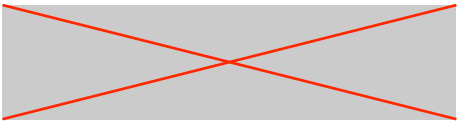
AIR BARRIER PATH



2x6 SLEEPER

24" SIMPSON PWF STRAP SECURED WITH ONE 1/4" X 3" SIMPSON SDS SCREW AND 5 - 3 1/4" HANGER NAILS TOP AND BOTTOM, MAX 24" OC STRAP ANGLE NOT EXCEED 1:3 OR 18.5°

3/4" X 4" X 6" PWF PLY BLOCKS SECURED TO BOTTOM PLATES WITH 3 - 2 1/2" GALV NAILS



BUTTERWICK CONSTRUCTION & CARPENTRY LTD.  
 5628 82 Ave  
 Edmonton, AB T6B 3E6  
 Tel: 780.434.3559  
 www.butterwick.ca

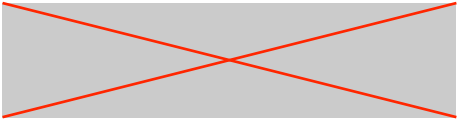
PERMIT DRAWINGS

DATE  
 January 7, 2023

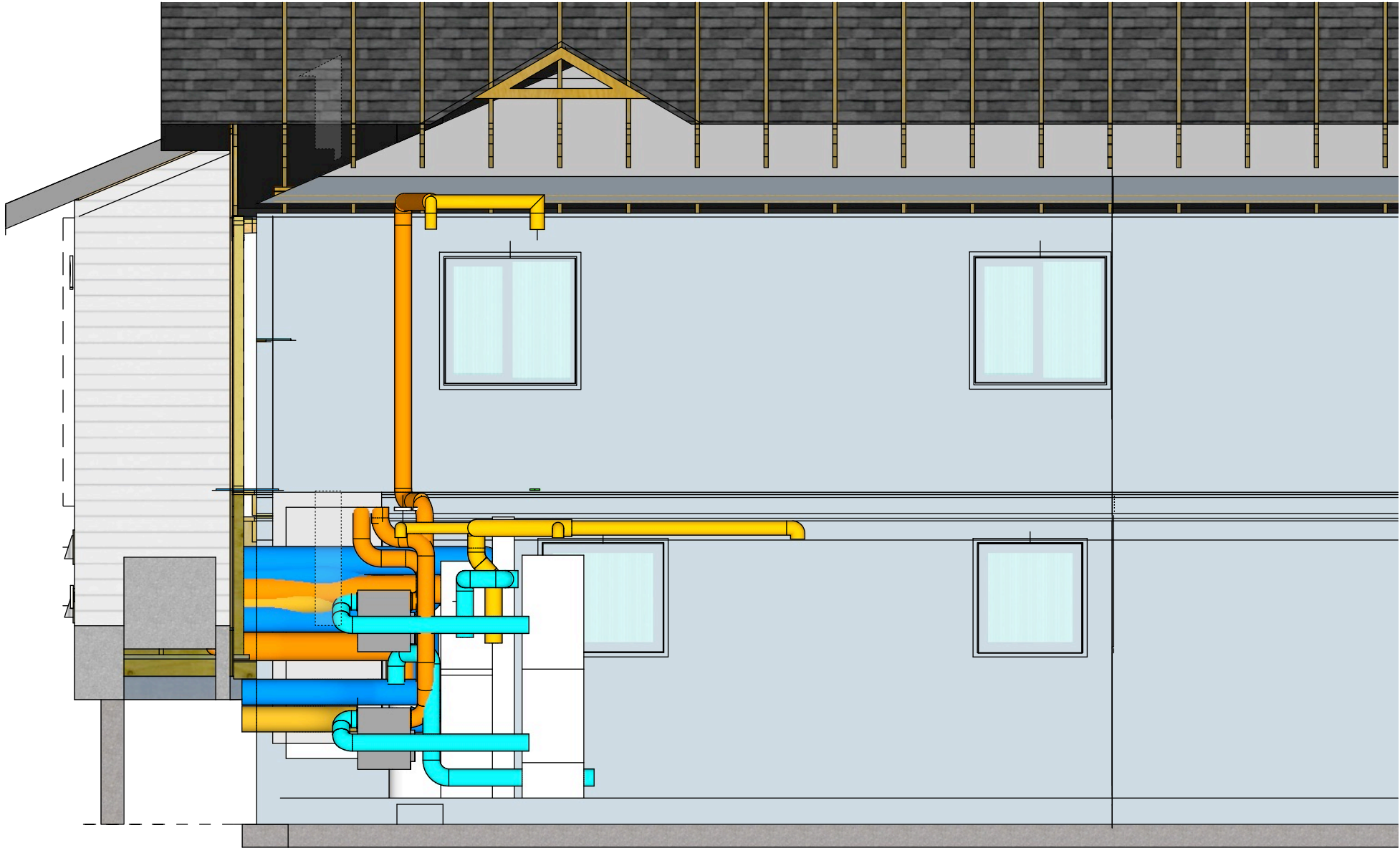
DRAWN BY  
 PA

NS SECTION

12



**BUTTERWICK CONSTRUCTION  
& CARPENTRY LTD.**  
5628 82 Ave  
Edmonton, AB T6B 3E6  
Tel: 780.434.3559  
www.butterwick.ca

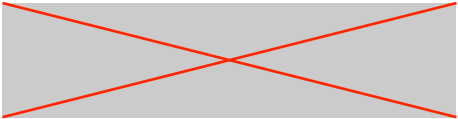


**PERMIT DRAWINGS**

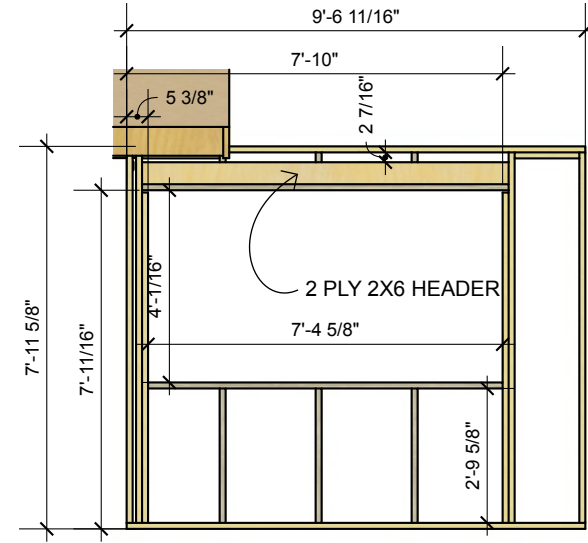
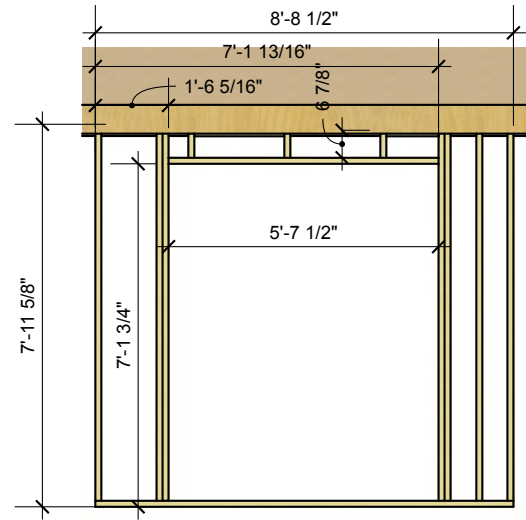
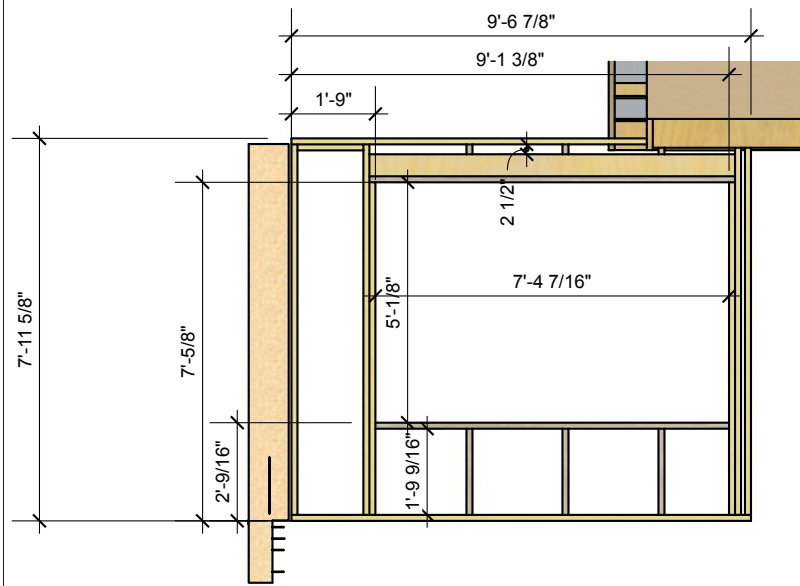
DATE  
January 7, 2023

DRAWN BY  
PA

EW SECTION



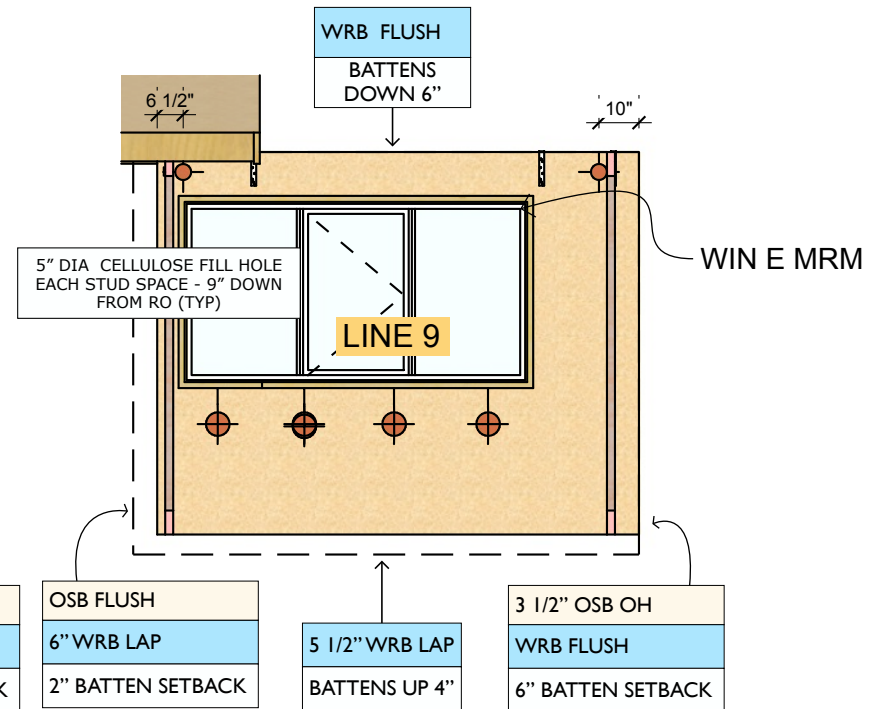
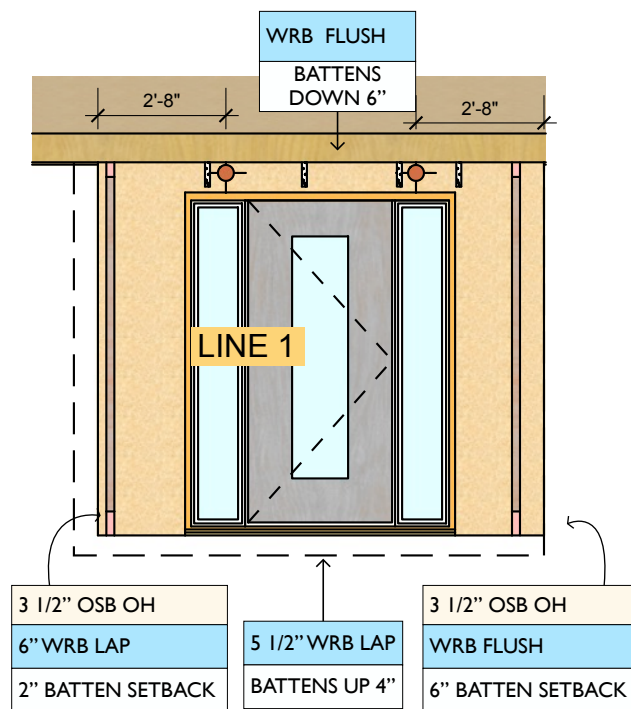
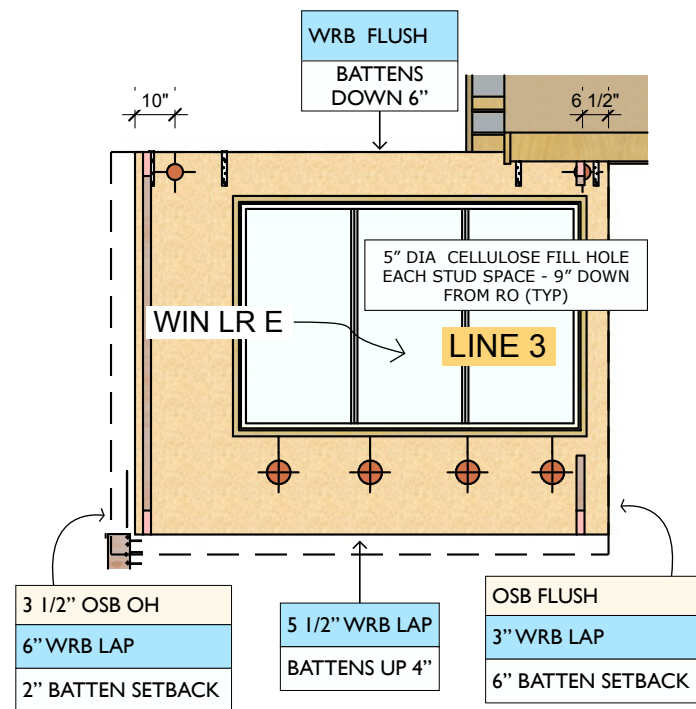
**BUTTERWICK CONSTRUCTION  
& CARPENTRY LTD.**  
5628 82 Ave  
Edmonton, AB T6B 3E6  
Tel: 780.434.3559  
www.butterwick.ca



**E LEFT**

**E MID**

**E RIGHT**



**E LEFT**

**E MID**

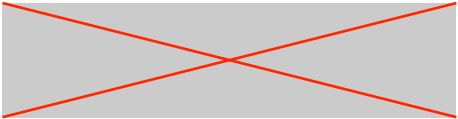
**E RIGHT**

**PERMIT DRAWINGS**

DATE  
January 7, 2023

DRAWN BY  
PA

**EAST PANELS**



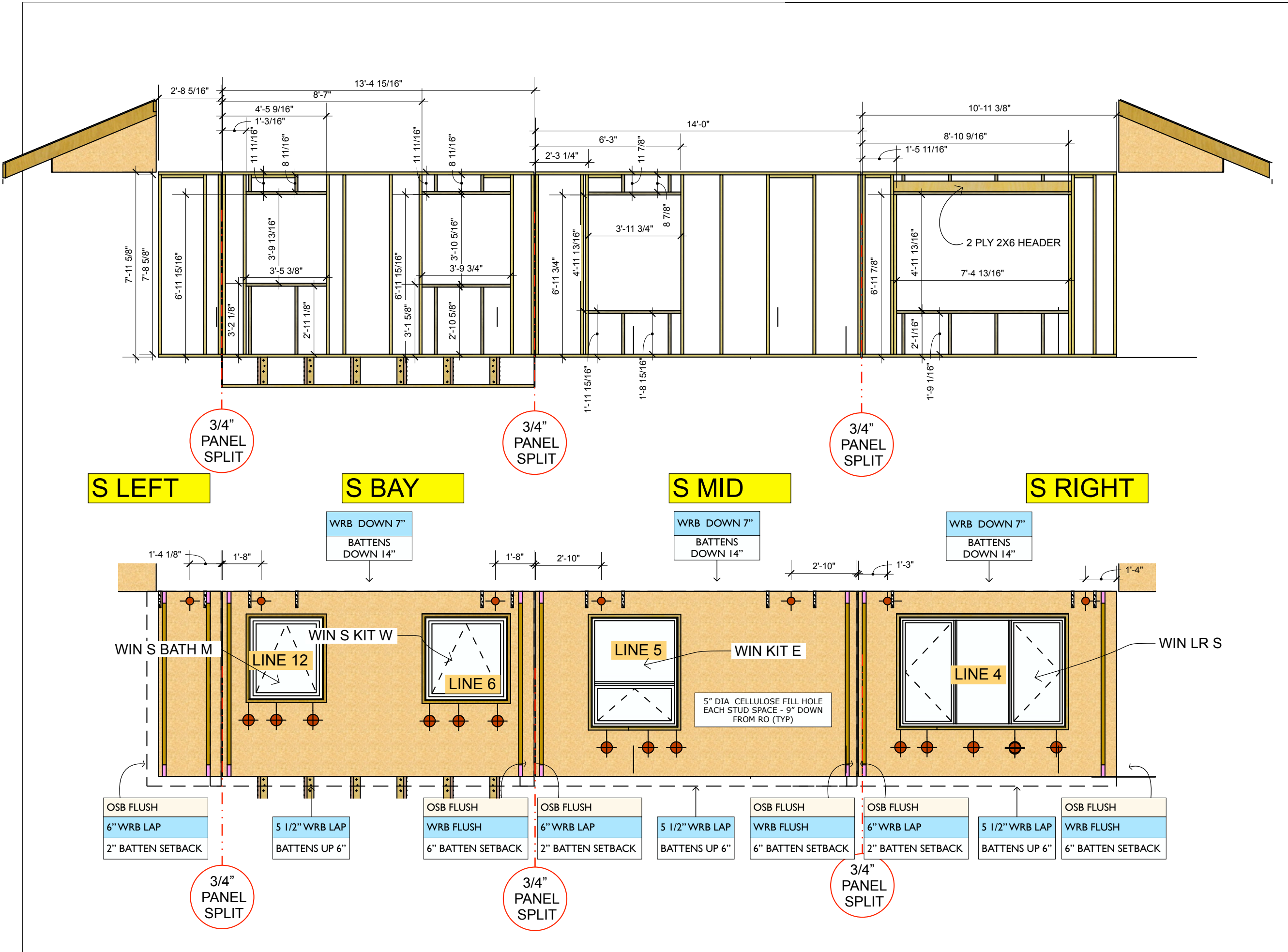
**BUTTERWICK CONSTRUCTION  
& CARPENTRY LTD.**  
5628 82 Ave  
Edmonton, AB T6B 3E6  
Tel: 780.434.3559  
www.butterwick.ca

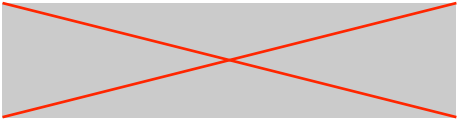
**PERMIT DRAWINGS**

DATE  
January 7, 2023

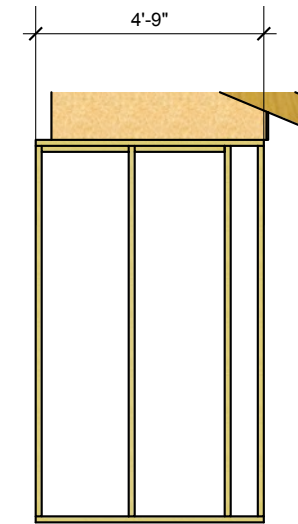
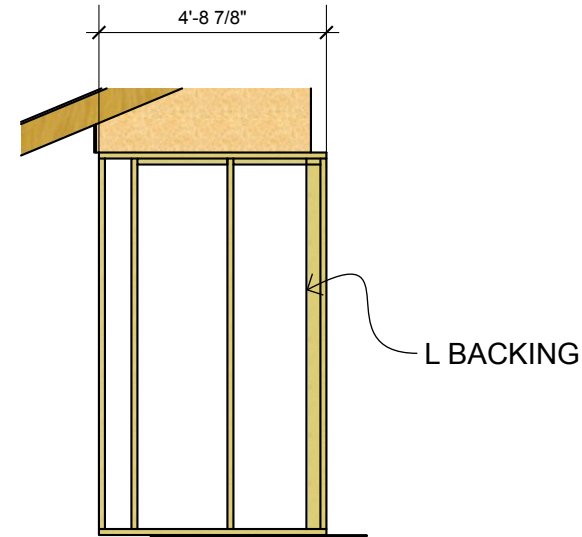
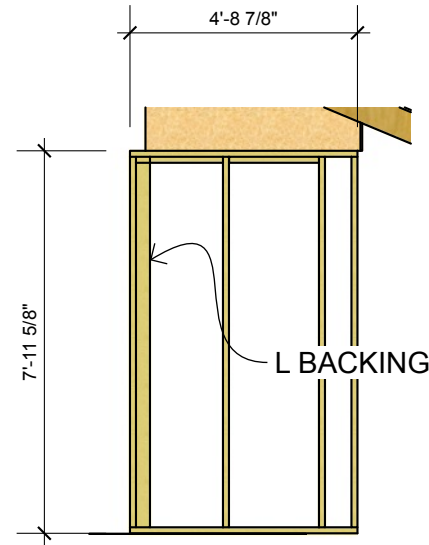
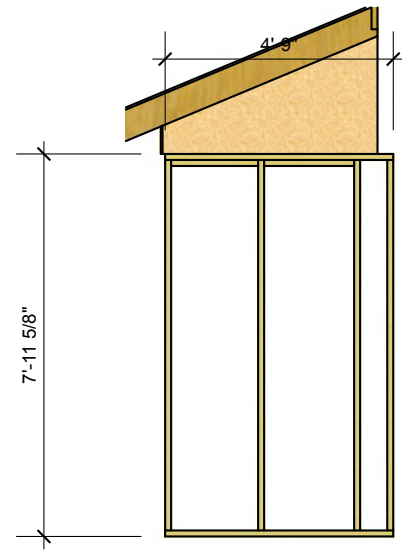
DRAWN BY  
PA

**SOUTH PANELS**





BUTTERWICK CONSTRUCTION  
& CARPENTRY LTD.  
5628 82 Ave  
Edmonton, AB T6B 3E6  
Tel: 780.434.3559  
www.butterwick.ca



**S WEST WING**

**S EAST WING**

**N EAST WING**

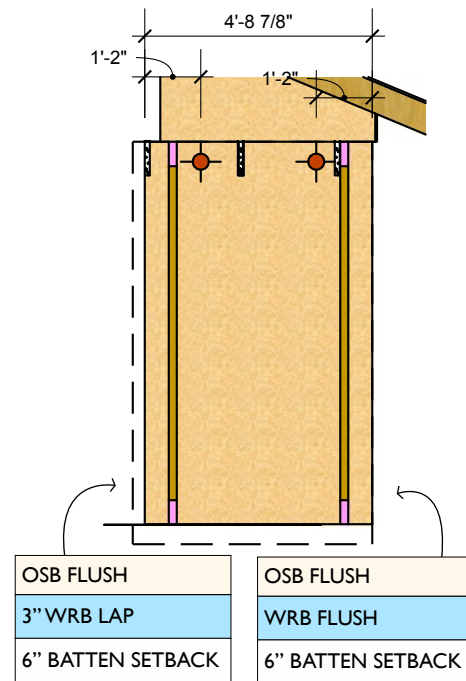
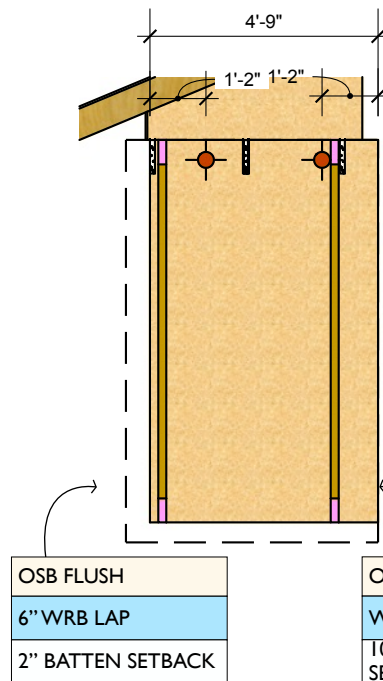
**N WEST WING**

**PERMIT DRAWINGS**

DATE  
January 7, 2023

DRAWN BY  
PA

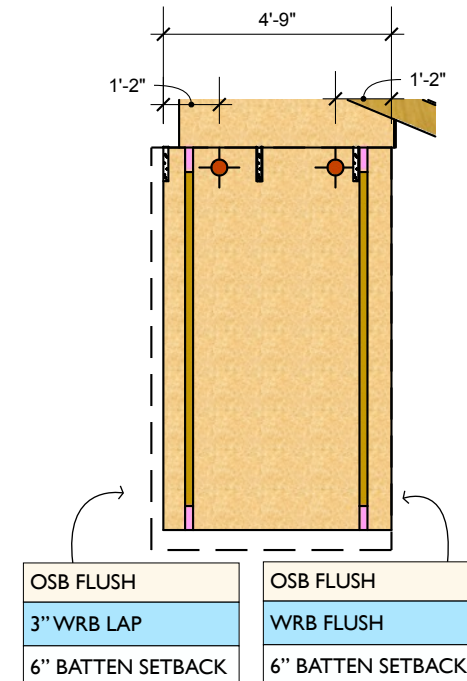
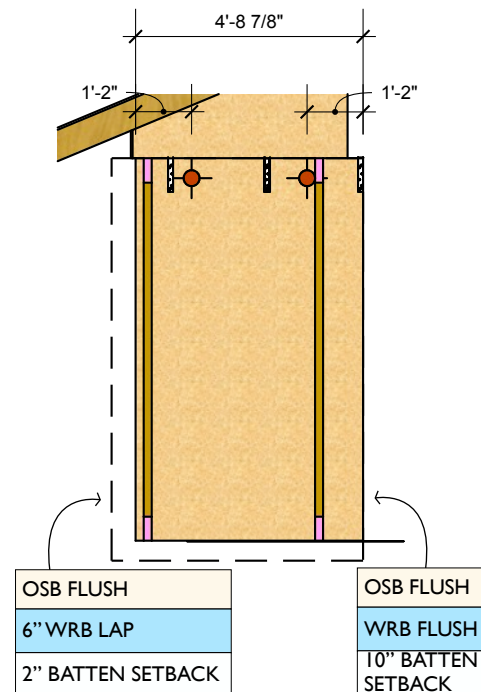
**N & S WING WALL  
PANELS**



WRB FLUSH  
BATTENS  
DOWN 6"

ALL 4 PANELS  
THIS PAGE

5 1/2" WRB LAP  
BATTENS UP 6"



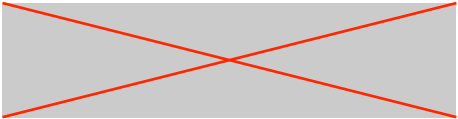
**S WEST WING**

**S EAST WING**

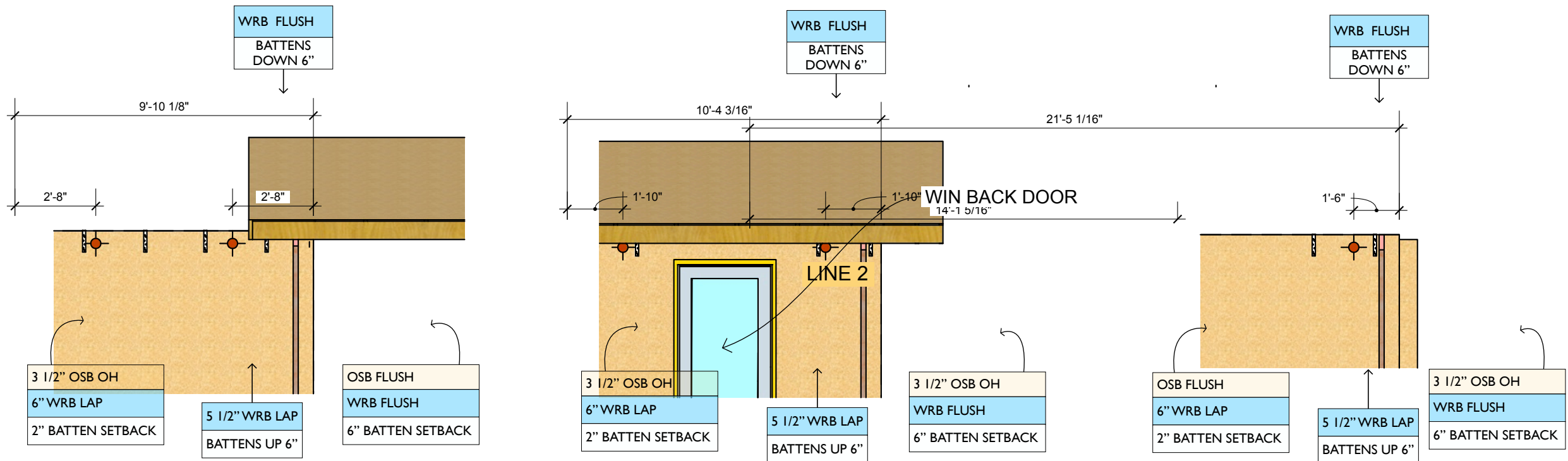
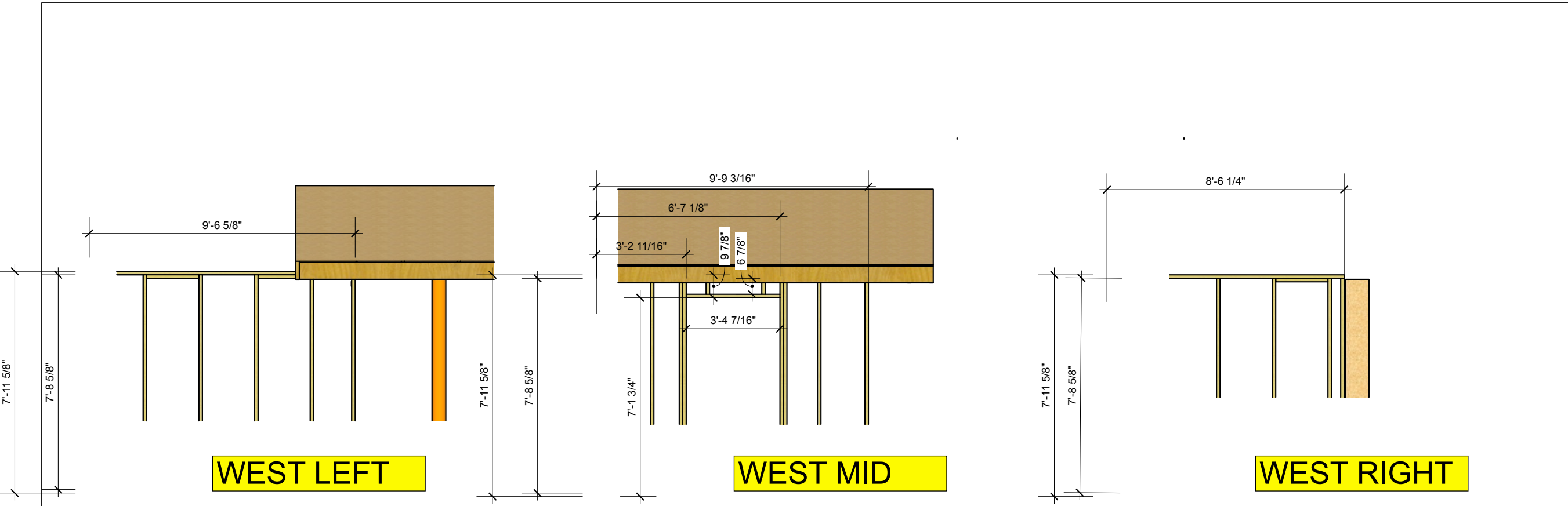
**N EAST WING**

**N WEST WING**





**BUTTERWICK CONSTRUCTION  
& CARPENTRY LTD.**  
5628 82 Ave  
Edmonton, AB T6B 3E6  
Tel: 780.434.3559  
www.butterwick.ca

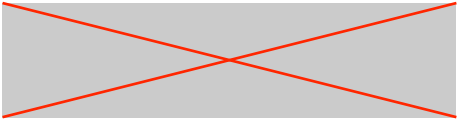


**PERMIT DRAWINGS**

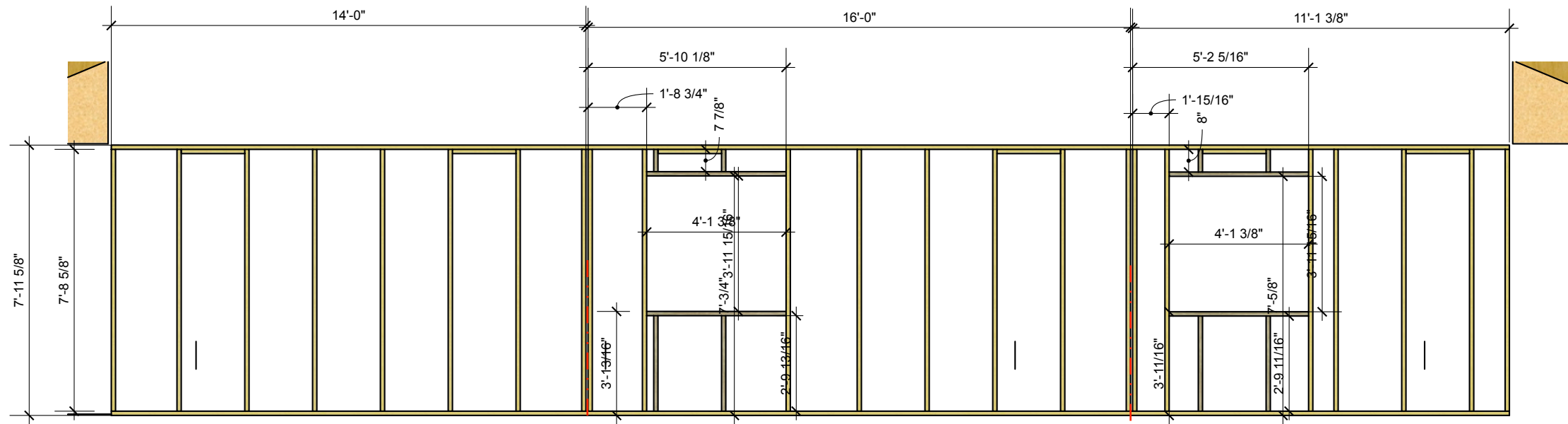
**DATE**  
January 7, 2023

**DRAWN BY**  
PA

**WEST PANELS**



**BUTTERWICK CONSTRUCTION  
& CARPENTRY LTD.**  
5628 82 Ave  
Edmonton, AB T6B 3E6  
Tel: 780.434.3559  
www.butterwick.ca



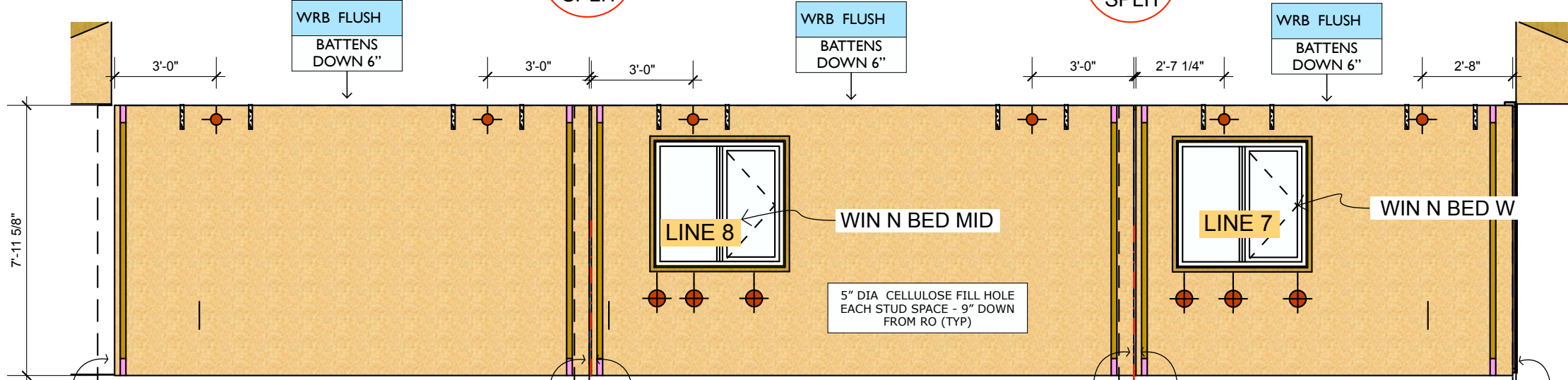
**N LEFT**

**N MID**

**N RIGHT**

3/4" PANEL SPLIT

3/4" PANEL SPLIT



**N LEFT**

**N MID**

**N RIGHT**

3/4" PANEL SPLIT

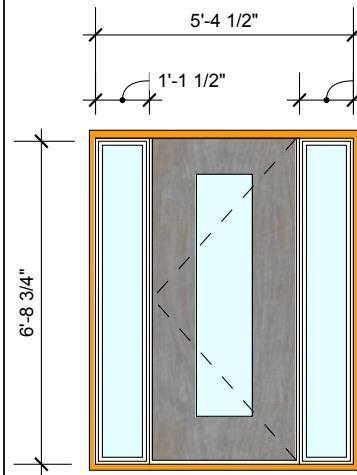
3/4" PANEL SPLIT

**PERMIT DRAWINGS**

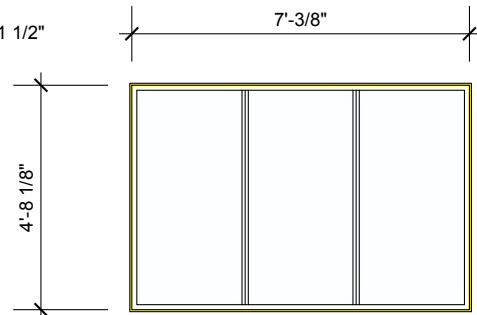
DATE  
January 7, 2023

DRAWN BY  
PA

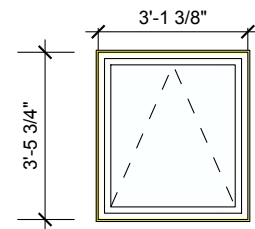
**NORTH PANELS**



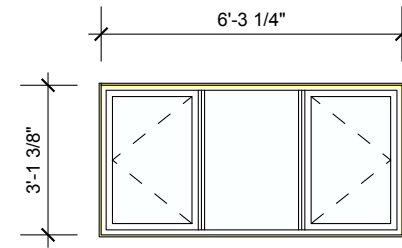
FRONT DOOR



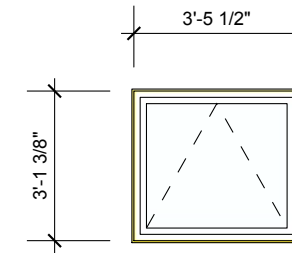
LR EAST



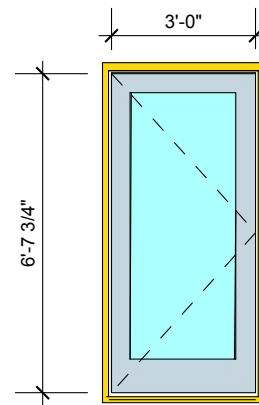
BATHROOM SOUTH



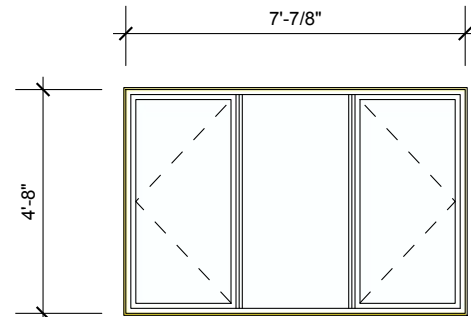
BASE LR EAST



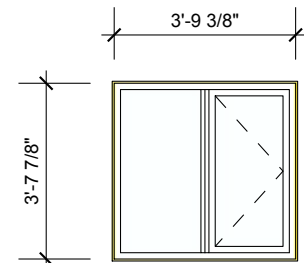
BASE HALL NORTH



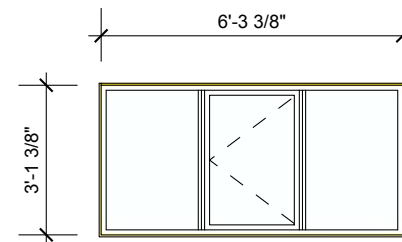
BACK DOOR



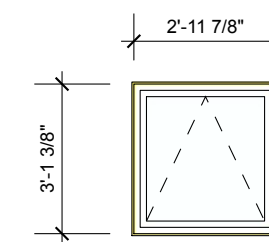
LR SOUTH



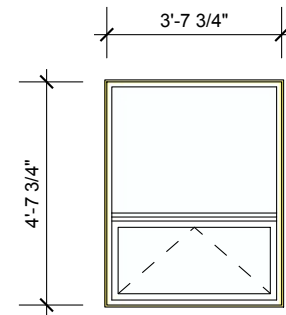
BEDROOM NW



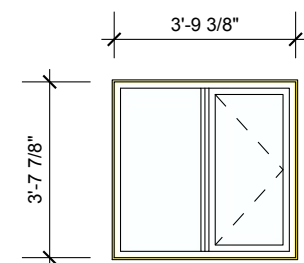
BASE KIT SOUTH



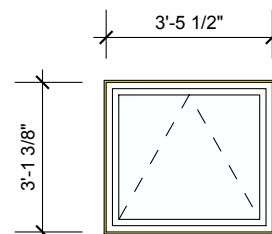
BASE BEDROOM NORTH



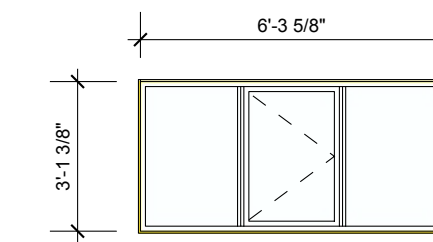
KITCHEN SE



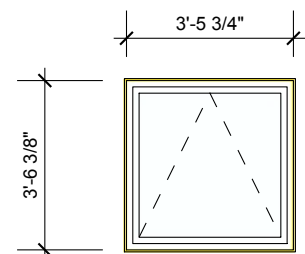
BEDROOM NORTH MID



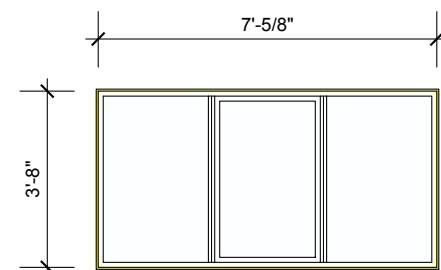
BASE LAUNDRY SOUTH



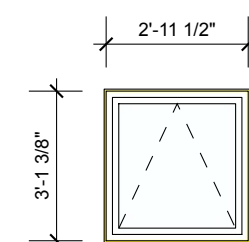
BASE BEDROOM EAST



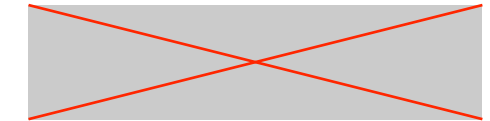
KITCHEN SW



M BEDROOM EAST



BASE BATH SOUTH



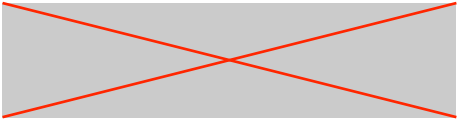
BUTTERWICK CONSTRUCTION  
& CARPENTRY LTD.  
5628 82 Ave  
Edmonton, AB T6B 3E6  
Tel: 780.434.3559  
www.butterwick.ca

PERMIT DRAWINGS

DATE  
January 7, 2023

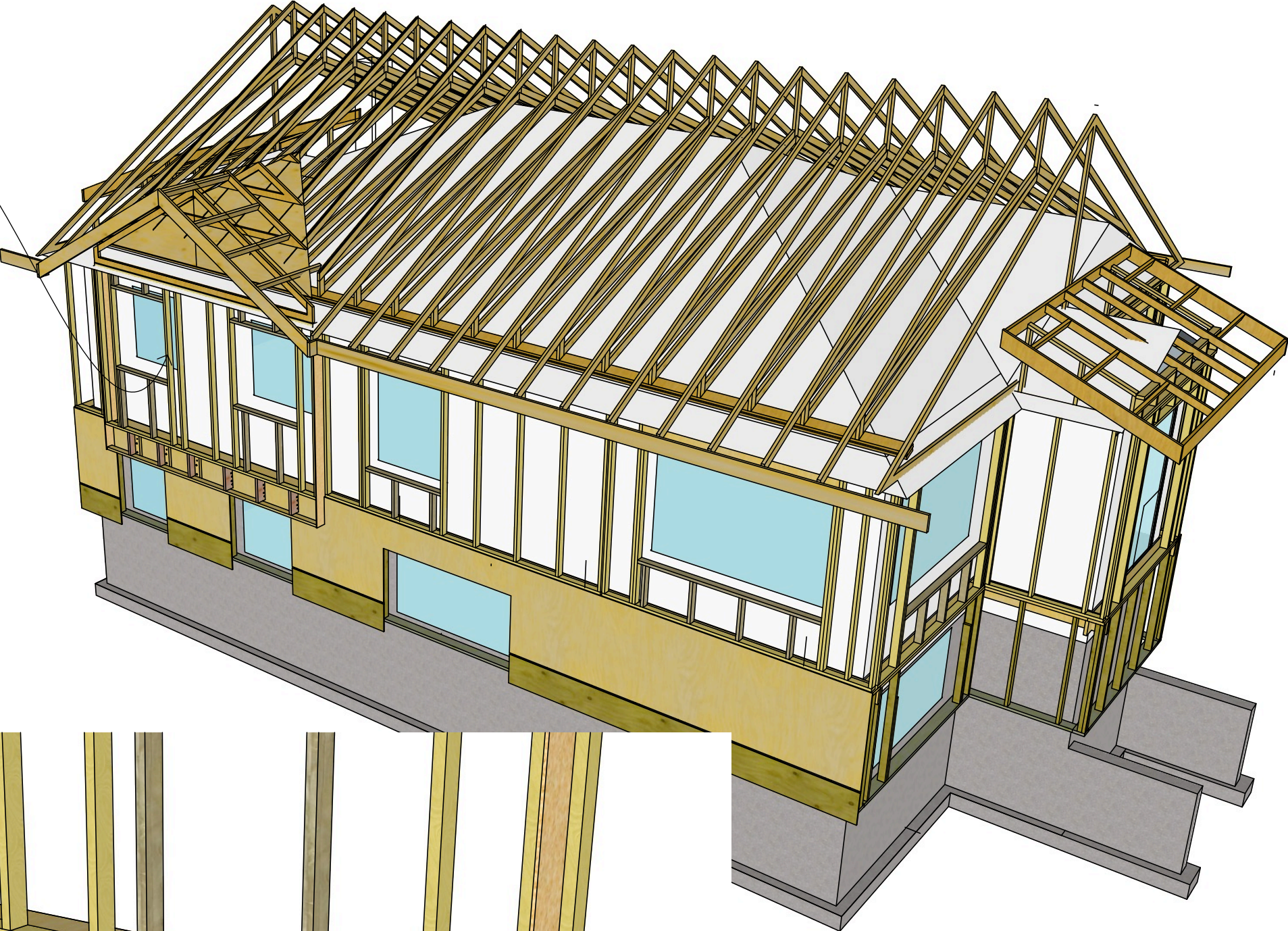
DRAWN BY  
PA

WINDOW SCHEDULE

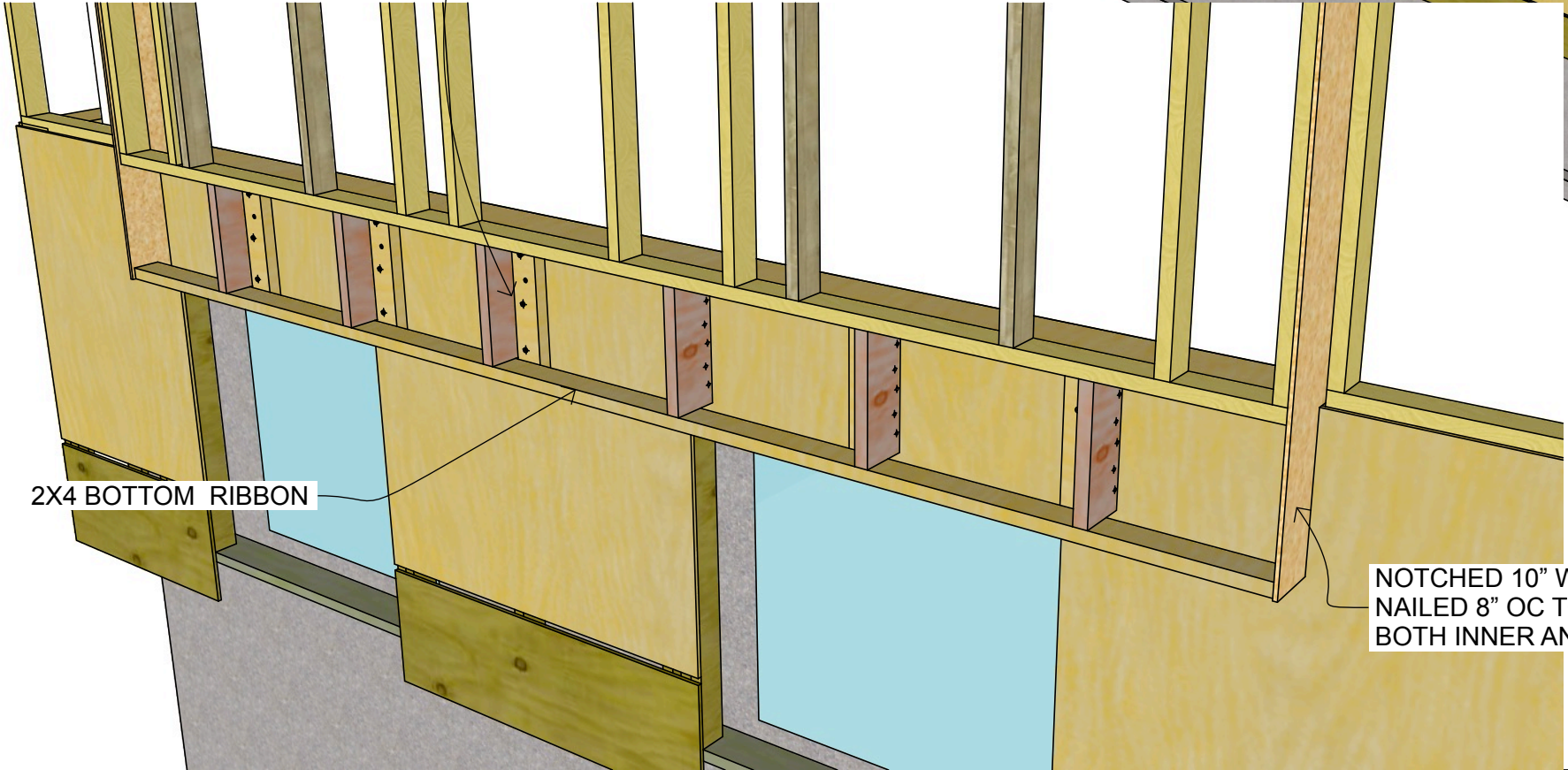


**BUTTERWICK CONSTRUCTION  
& CARPENTRY LTD.**  
 5628 82 Ave  
 Edmonton, AB T6B 3E6  
 Tel: 780.434.3559  
 www.butterwick.ca

THIS PANEL CANTILEVERED OUT 6"



**CANTILEVER BRACKET:**  
 - FASTENED TO BB STUDS WITH 4- 3"X 1/4"  
 SIMPSON SDS SCREWS  
 - ALTERNATE SIDES  
 - PA TO MAKE



2X4 BOTTOM RIBBON

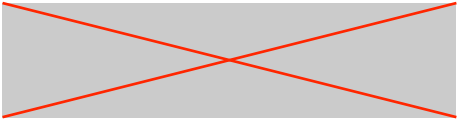
NOTCHED 10" WIDE 7/16" OSB GUSSET  
 NAILED 8" OC TO END STUDS OF  
 BOTH INNER AND OUTER PANELS

**PERMIT DRAWINGS**

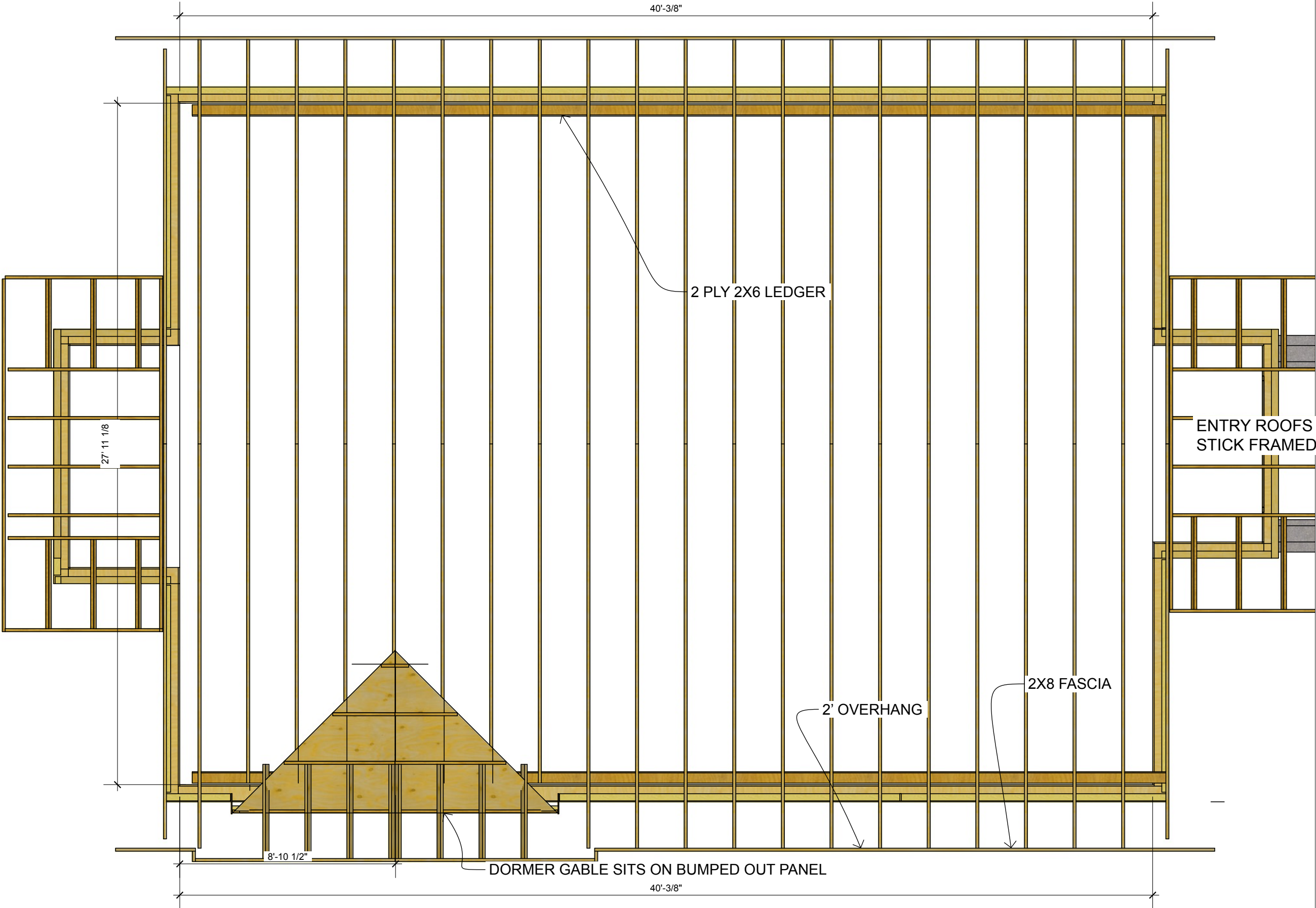
DATE  
 January 7, 2023

DRAWN BY  
 PA

SOUTH BAY  
 CANTILEVER



**BUTTERWICK CONSTRUCTION  
& CARPENTRY LTD.**  
5628 82 Ave  
Edmonton, AB T6B 3E6  
Tel: 780.434.3559  
www.butterwick.ca



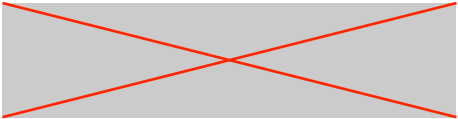
ENTRY ROOFS TO BE  
STICK FRAMED

**PERMIT DRAWINGS**

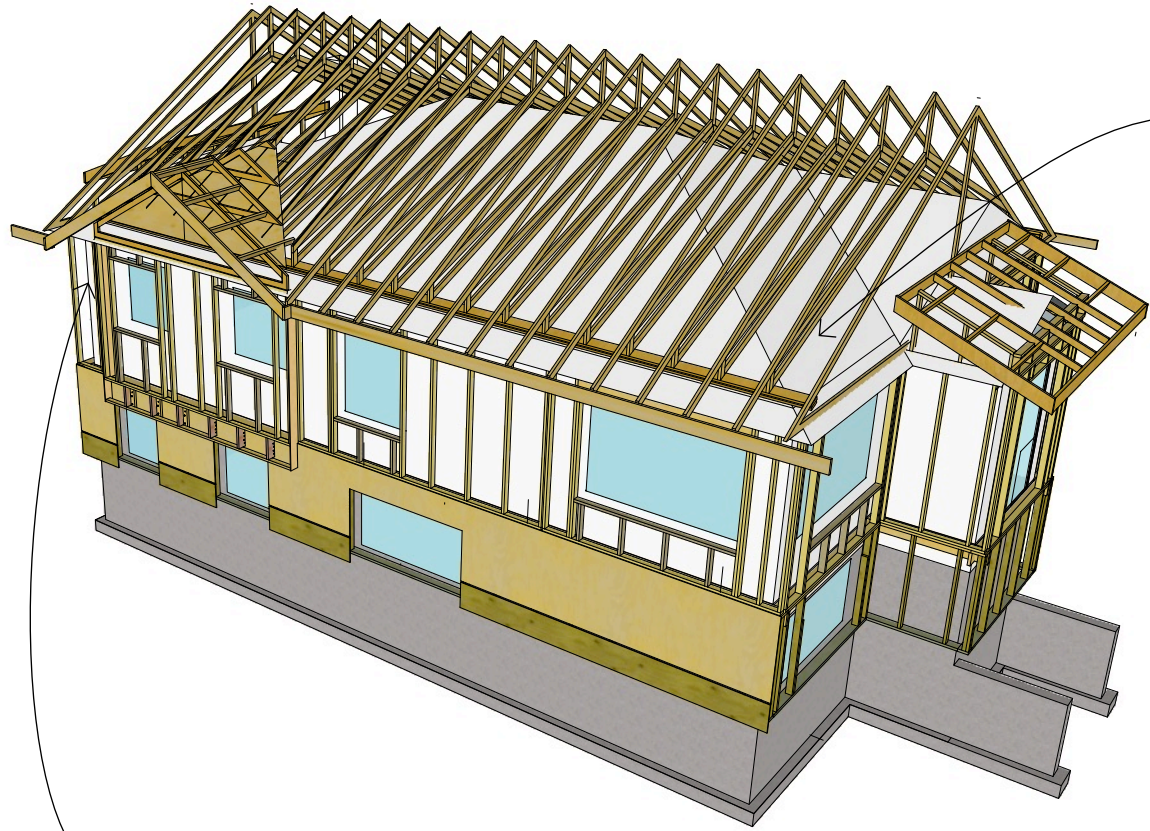
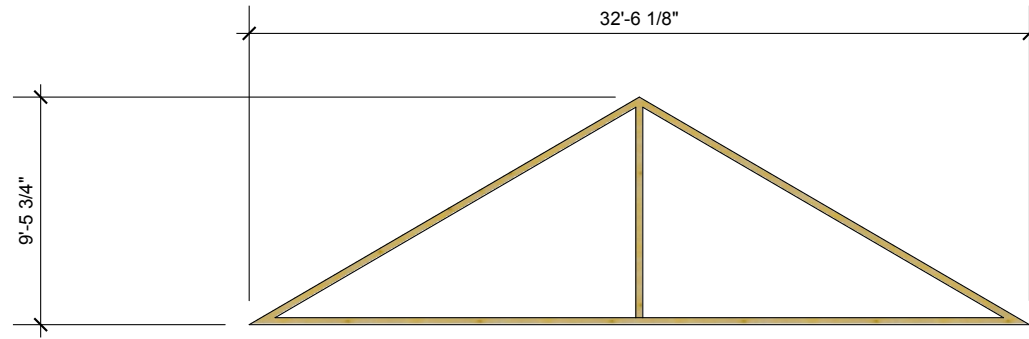
DATE  
January 7, 2023

DRAWN BY  
PA

ROOF TRUSS  
LAYOUT



BUTTERWICK CONSTRUCTION  
& CARPENTRY LTD.  
5628 82 Ave  
Edmonton, AB T6B 3E6  
Tel: 780.434.3559  
www.butterwick.ca



THIS PANEL CANTILEVERED OUT 6"

ENTRY ROOFS TO BE  
STICK FRAMED

7:12 TOP CHORD

GABLE TRUSSES

5:12 BOTTOM CHORD

. WITH 5/12 SEAT CUT

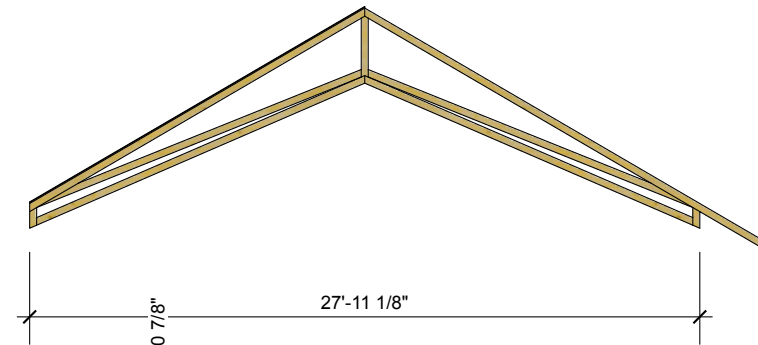
1'-3/8"

2'-8 1/8"

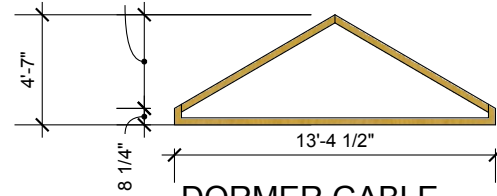
27'-11 1/8"

2'-8 1/8"

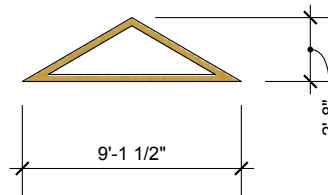
COMMON TRUSSES



STUBBED TRUSSES



DORMER GABLE



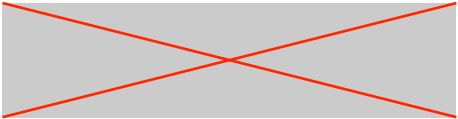
1ST DORMER TRUSS

PERMIT DRAWINGS

DATE  
January 7, 2023

DRAWN BY  
PA

ROOF TRUSS  
DETAILS



BUTTERWICK CONSTRUCTION  
& CARPENTRY LTD.  
5628 82 Ave  
Edmonton, AB T6B 3E6  
Tel: 780.434.3559  
www.butterwick.ca

LOOKOUTS FOR 24" OH

LOCATE PIGGY BACK TRUSSES FOR LEVEL LOOKOUTS

2 PLY 2X6 LEDGER

CENTRE GABLE TRUSS  
ON PANEL BELOW

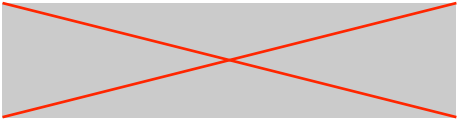
6"

PERMIT DRAWINGS

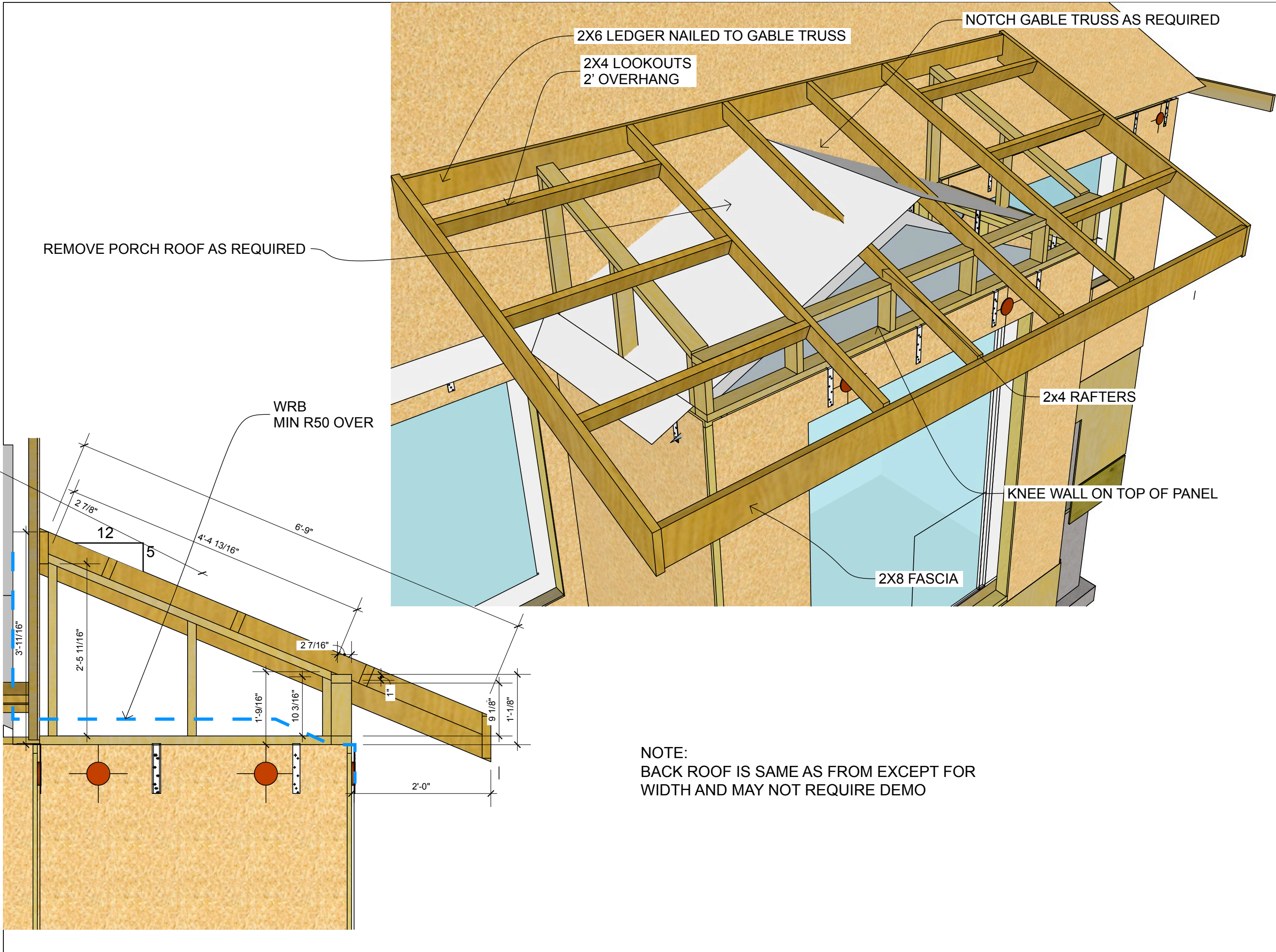
DATE  
January 7, 2023

DRAWN BY  
PA

SOUTH DORMER  
ROOF DETAILS



BUTTERWICK CONSTRUCTION  
& CARPENTRY LTD.  
5628 82 Ave  
Edmonton, AB T6B 3E6  
Tel: 780.434.3559  
www.butterwick.ca



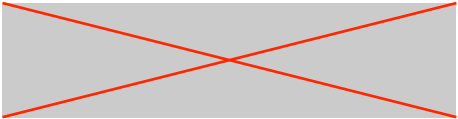
PERMIT DRAWINGS

DATE  
January 7, 2023

DRAWN BY  
PA

ENTRY ROOF  
DETAILS





**BUTTERWICK CONSTRUCTION  
& CARPENTRY LTD.**  
5628 82 Ave  
Edmonton, AB T6B 3E6  
Tel: 780.434.3559  
www.butterwick.ca

---

**PERMIT DRAWINGS**

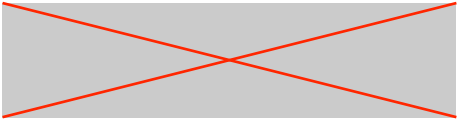
---

**DATE**  
January 7, 2023

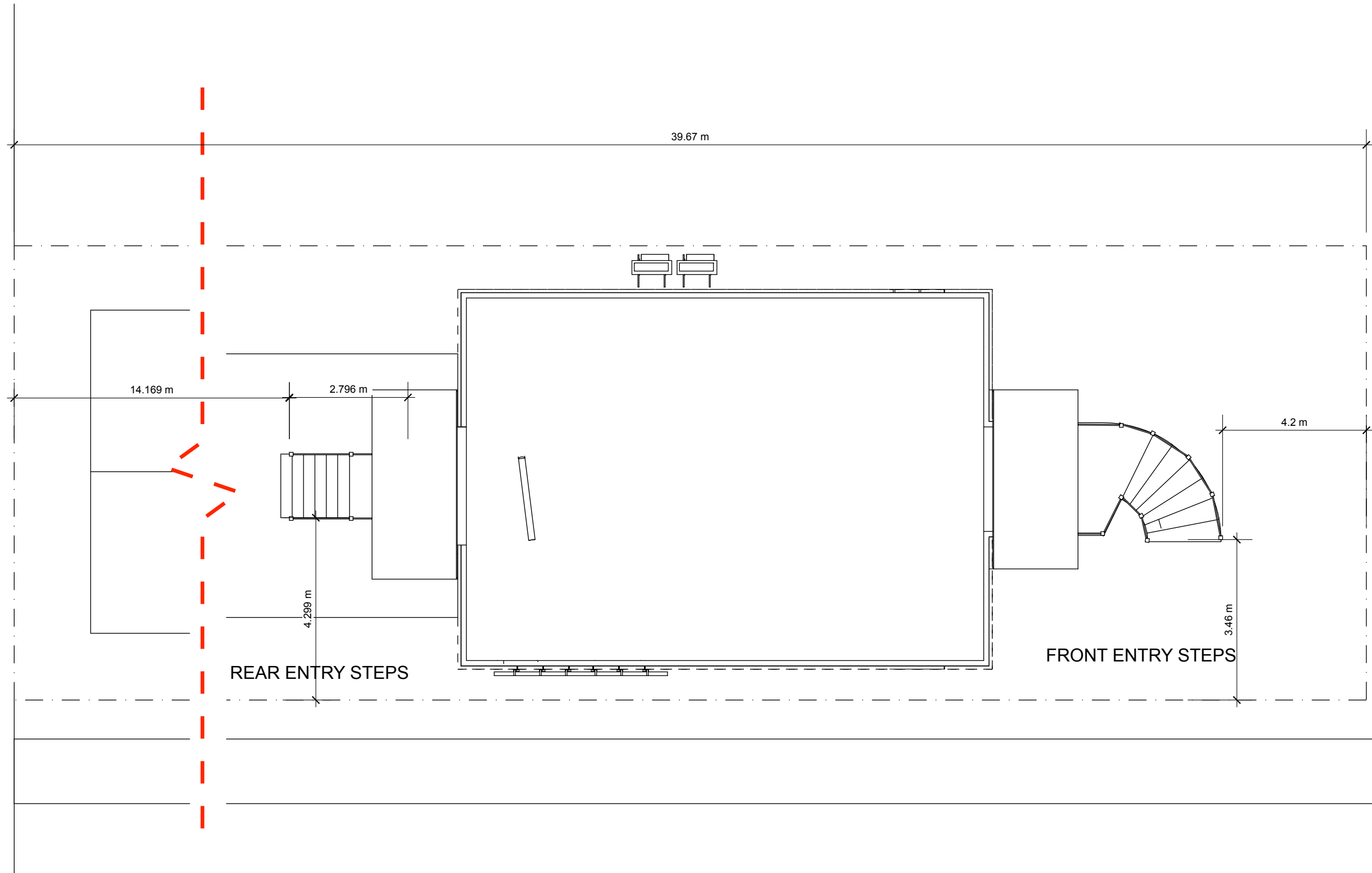
---

**DRAWN BY**  
PA

RPR



BUTTERWICK CONSTRUCTION  
& CARPENTRY LTD.  
5628 82 Ave  
Edmonton, AB T6B 3E6  
Tel: 780.434.3559  
www.butterwick.ca

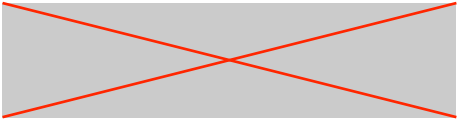


**PERMIT DRAWINGS**

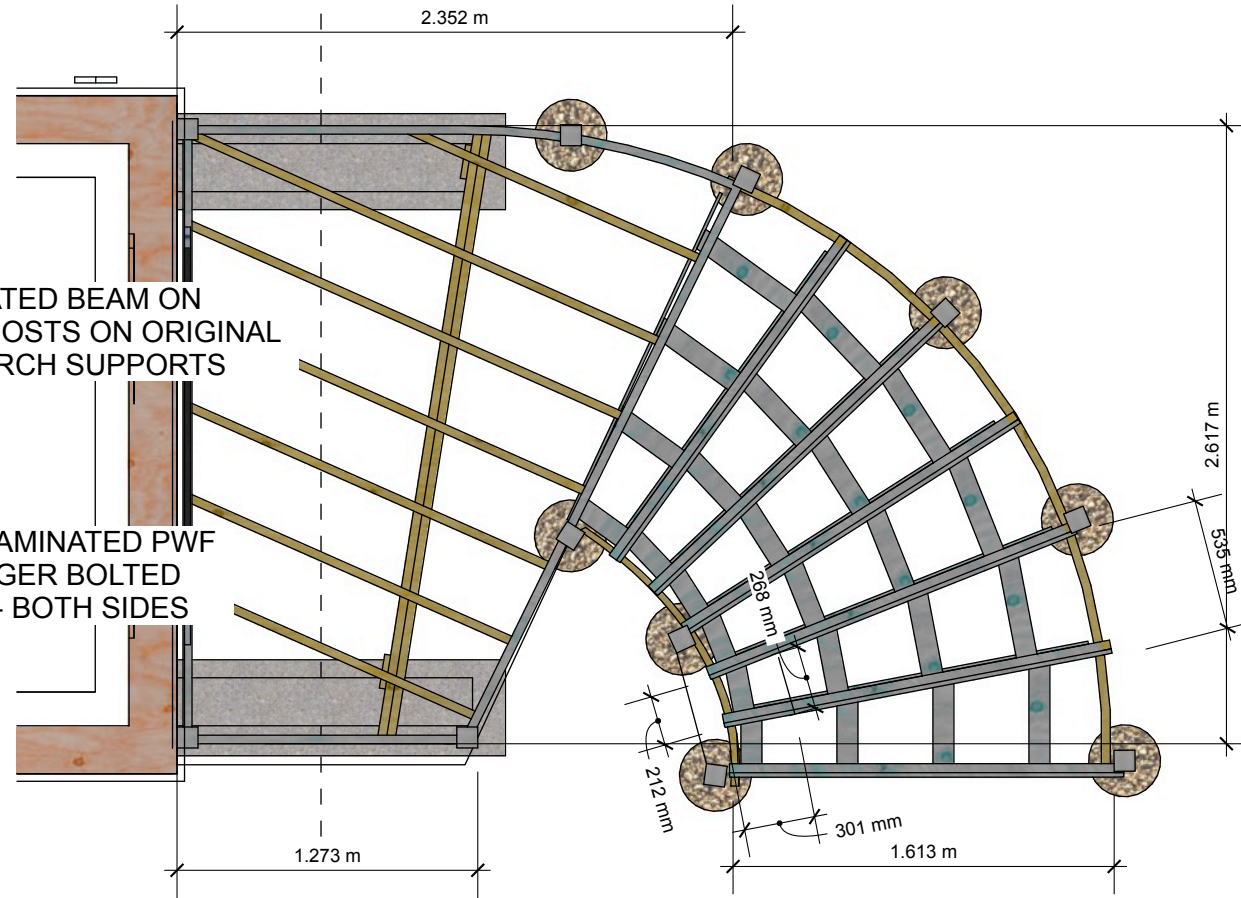
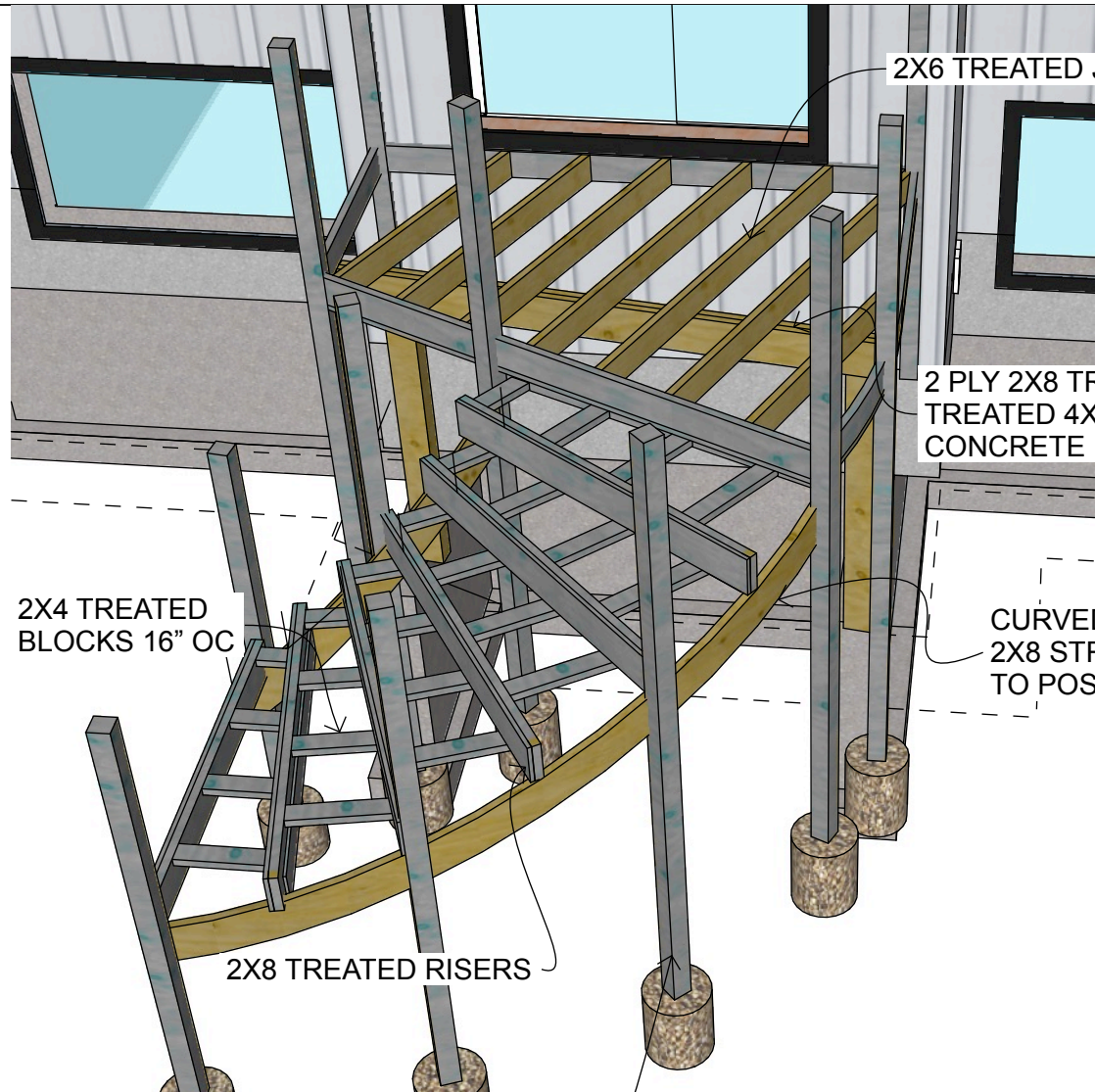
DATE  
January 7, 2023

DRAWN BY  
PA

ENTRY STEP SET  
BACKS

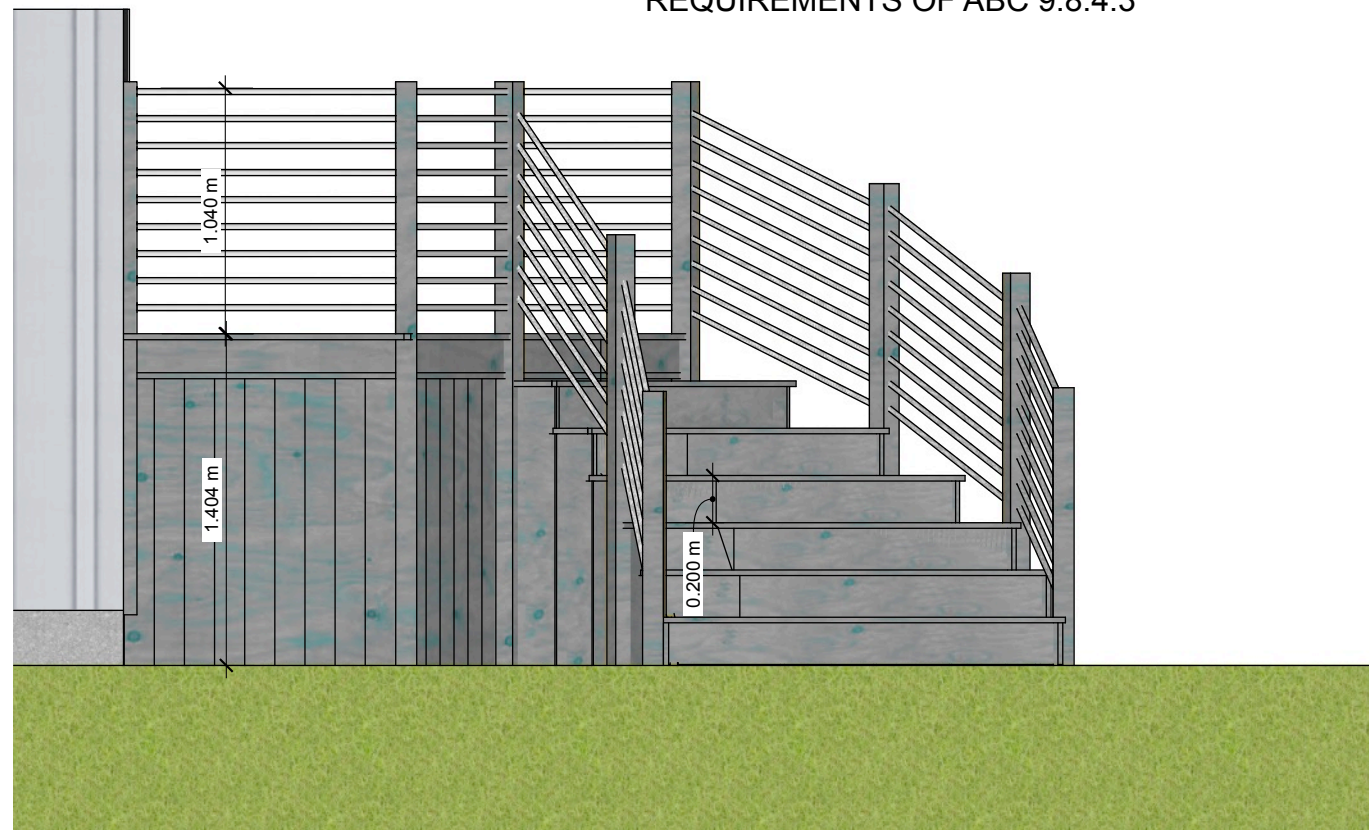


**BUTTERWICK CONSTRUCTION  
& CARPENTRY LTD.**  
5628 82 Ave  
Edmonton, AB T6B 3E6  
Tel: 780.434.3559  
www.butterwick.ca



NOTE: TAPERED TREADS TO MEET REQUIREMENTS OF ABC 9.8.4.3

4X4 TREATED POSTS SET IN 12" DIA 12" DEEP COMPACTED ROAD CRUSH

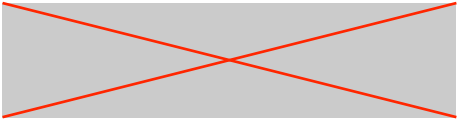


**PERMIT DRAWINGS**

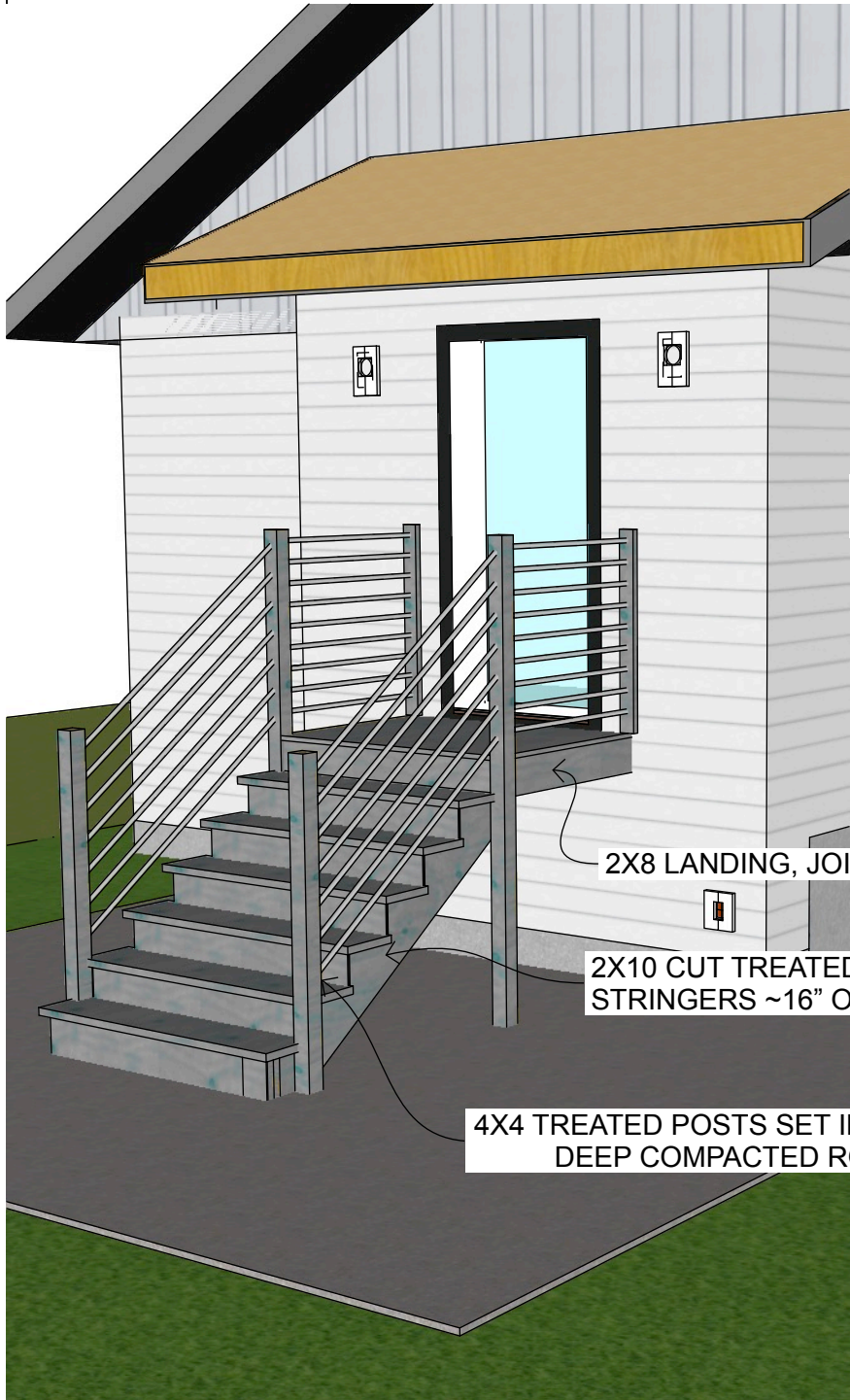
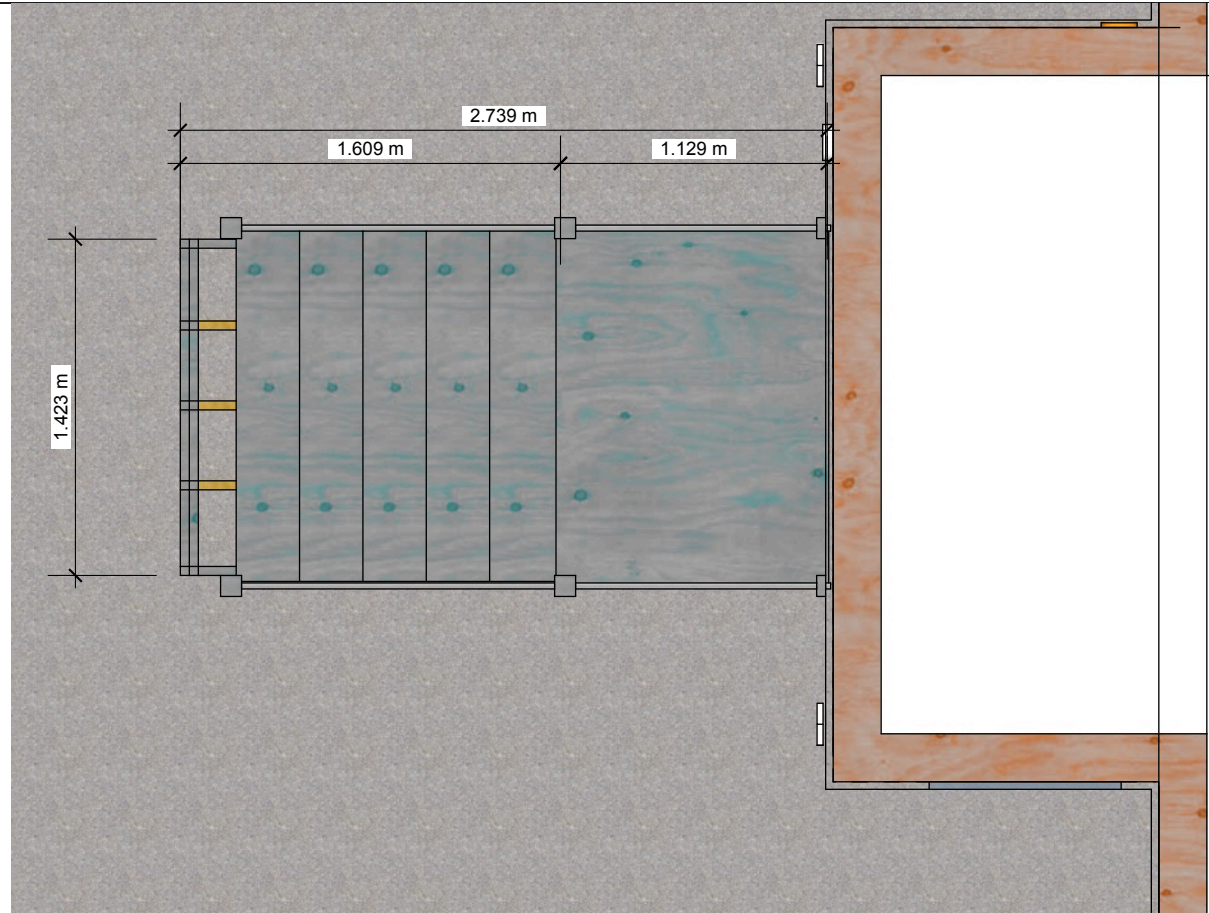
DATE  
January 7, 2023

DRAWN BY  
PA

ENTRY STEP  
DETAILS FRONT



**BUTTERWICK CONSTRUCTION  
& CARPENTRY LTD.**  
5628 82 Ave  
Edmonton, AB T6B 3E6  
Tel: 780.434.3559  
www.butterwick.ca

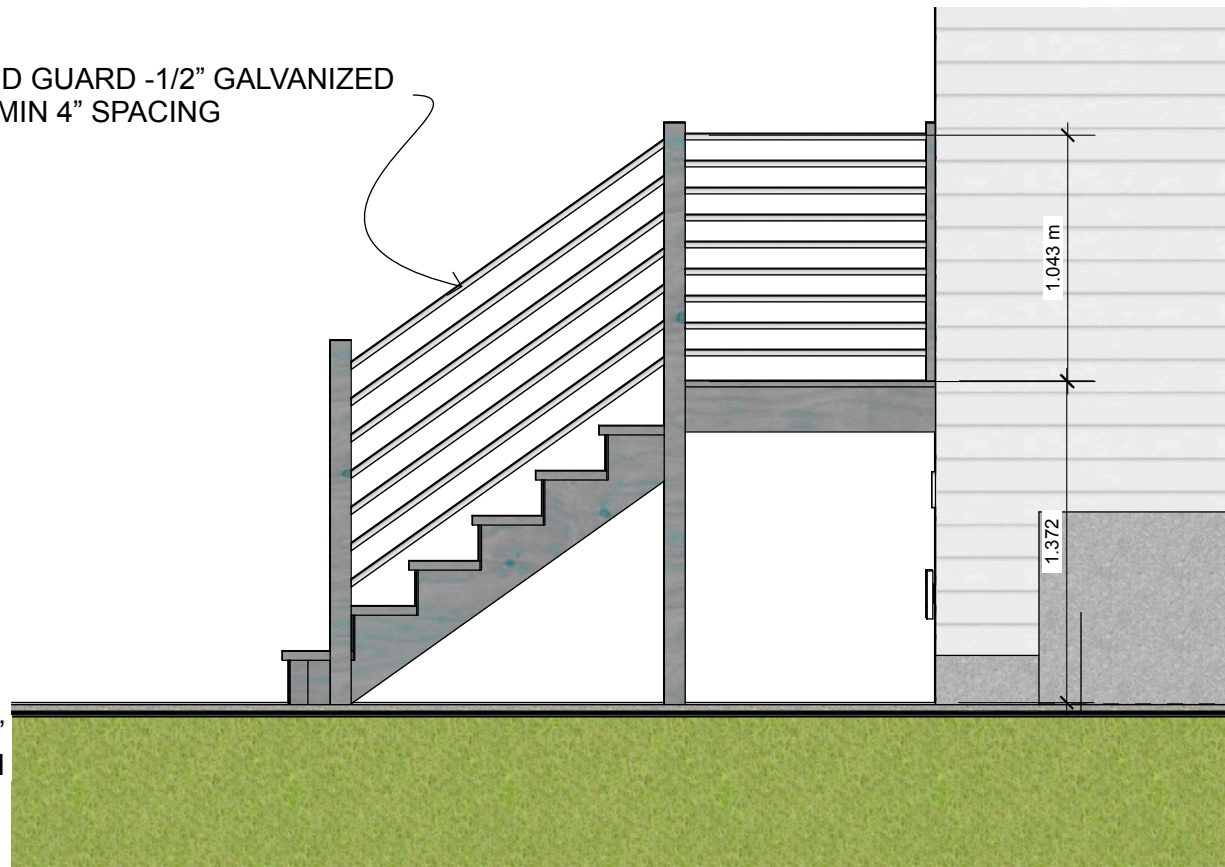


RAILING AND GUARD -1/2" GALVANIZED  
PIPE WITH MIN 4" SPACING

2X8 LANDING, JOISTS 16"OC

2X10 CUT TREATED  
STRINGERS ~16" OC

4X4 TREATED POSTS SET IN 12" DIA 12"  
DEEP COMPACTED ROAD CRUSH



**PERMIT DRAWINGS**

DATE  
January 7, 2023

DRAWN BY  
PA

ENTRY STEP  
DETAILS BACK